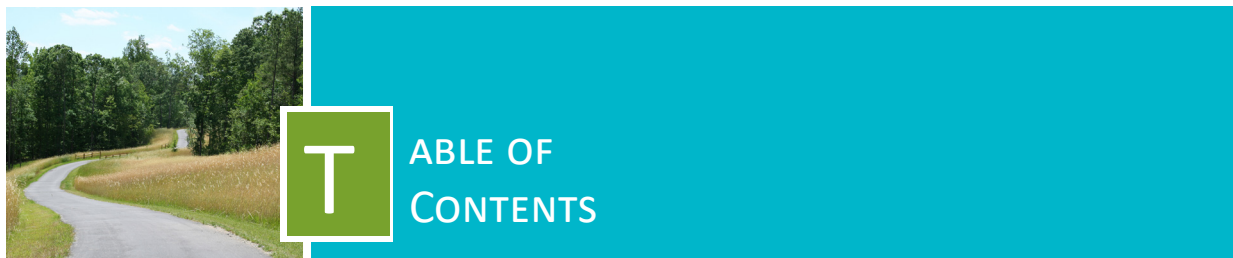


Recreation Plan 2018-2022

# Village of Alanson / Littlefield Township





Village of Alanson/Littlefield Township  
Recreation Plan 2018-2022

Chapter	Page Number
<b>1.0 Introduction and Community Description</b>	
Purpose of the Village of Alanson/ Littlefield Township Recreation Plan. . .	1
Community Description . . . . .	1
<b>2.0 Administrative Structure</b>	
Village Organization . . . . .	7
Past MDNR Grants and Other Funding Sources . . . . .	8
Township Organization . . . . .	9
Village and Township Cooperation . . . . .	10
Relationship with Other Agencies and Organizations . . . . .	10
<b>3.0 Recreation Inventory</b>	
Village of Alanson . . . . .	13
Littlefield Township. . . . .	15
Joint Village and Township . . . . .	15
Alanson-Littlefield Public Schools . . . . .	16
Alanson Beautification Center . . . . .	16
Oden Community Association . . . . .	17
Woodruff Park . . . . .	17
Street End Access to Crooked Lake . . . . .	17
Little Traverse Conservancy Nature Preserves. . . . .	19
Emmet County . . . . .	19
City of Petoskey Regional Parks . . . . .	21
Petoskey to Mackinaw City Rail Trail . . . . .	23
State of Michigan . . . . .	23
Private Recreational Facilities . . . . .	25
Americans with Disabilities Act Compliance. . . . .	25



## Table of Contents (cont.)

Chapter	Page Number
<b>4.0 Resource Inventory</b>	
Water Resources . . . . .	27
Fish and Wildlife . . . . .	27
<b>5.0 Description of the Planning Process . . . . .</b>	<b>31</b>
<b>6.0 Description of the Public Input Process. . . . .</b>	<b>33</b>
<b>7.0 Basis for Action / Goals and Objectives</b>	
Recreation Trends . . . . .	37
National Planning Standards . . . . .	39
Acreage Standards . . . . .	39
Related Planning Initiatives . . . . .	44
Goals and Objectives . . . . .	45
<b>8.0 Action Plan</b>	
Capital Improvements Schedule . . . . .	51
<b>Appendices</b>	
A. Alanson/Littlefield Parks and Recreation Survey - Results Summary	
B. Notice of Availability of the Draft Plan for Public Review and Comment	
C. Notice for the Public Meeting	
D. Minutes of Public Meeting / Plan Adoption Meeting	
E. Village of Alanson Resolution of Adoption	
F. Littlefield Township Resolution of Adoption	
G. Letters of Transmittal	
H. Plan Certification Checklist	



# 1

## INTRODUCTION AND COMMUNITY DESCRIPTION

### Purpose of the Village of Alanson / Littlefield Township Recreation Plan

The Recreation Plan provides citizens of the Village of Alanson and Littlefield Township the means to identify and define opportunities for recreational activities and development and to ensure that the recreational infrastructure sustains access to such opportunities now and into the future.

Since many of the recreational opportunities are directly related to the area's natural resources, the importance of ensuring public access to these assets is central to the Plan's purpose. The goals and policies of the Plan center on encouraging development to conform to standards and guidelines necessary to protect the rural character and natural resources of the Village and Township. These goals and policies also include the provision and development of recreation infrastructure that enables tourist-based activities, that directly serves the interests and needs of Village and Township residents, and that encourages and facilitates, where and when possible, to integrate the full spectrum of private and public opportunities.

This Plan conforms to the guidelines established by the Michigan Department of Natural Resources (MDNR). Approval of this Plan by the MDNR qualifies the Village and Township for recreation grants administered by the MDNR's Recreation Grants Section. The grant eligibility period is set for five years from the acceptance date by this department.

### Community Description

#### Regional Setting

Littlefield Township is located in the east-central portion of Emmet County, which is situated in the northwest region of Michigan's Lower Peninsula. Littlefield Township comprises 21.7 square miles of the County's 468 square miles. The Township is smaller than a standard geographic township in land area (21.7 square miles versus the standard 36 square miles) and encompasses the northern portion of T35N-R4W. The Township's irregular size and shape is due to the southern boundary being the approximate centerline of Pickerel Lake and Crooked Lake. The distance from the north boundary to the south boundary is approximately four miles, with the east to west distance at approximately six miles. In addition to the Village of Alanson, the unincorporated communities of Ponshewaing and Oden, both located on the north shore of Crooked Lake, are under Littlefield Township jurisdiction.

The Village of Alanson is one square mile in size, consisting of the east  $\frac{1}{4}$  of Section 9 and the west  $\frac{3}{4}$  of Section 10.

Littlefield Township is bounded on the north by Maple River Township, on the east by Cheboygan County's Tuscarora Township, on the south by Springvale Township, and on the west by Little Traverse Township. The City of Petoskey is approximately 12 miles west of Alanson and Littlefield Township. The cities of Charlevoix and Traverse City are approximately 25



and 75 miles southwest of the Township, respectively. Figure 1-1 illustrates the Village and Township's location in relation to Emmet County and the State of Michigan. Figure 1-2 and Figure 1-3 present 2008 aerial photography of the Village and Township and detail the transportation routes serving the communities.

### **Population Characteristics**

According to the 2011-2015 American Community Survey (ACS) 5-Year Estimates, the population for Littlefield Township in 2015 was 2,992 persons (1,584 male - 1,408 female), averaging 137.9 persons per square mile for the Township's 21.7 square miles of land area. The most recent census includes the population for the village within the township, but also lists the village's population independently. Therefore, the Littlefield Township population of 2,992 includes the Village of Alanson, whose population is 675 (316 male - 359 female). Alanson's population density is 675 persons per square mile.

In discussing the population for Littlefield Township and the Village of Alanson, however, it is important to note that the figure presented by the 2011-2015 ACS does not reflect the actual number of persons residing in the community during the summer months. The Census tally only counts residents who spend more than six months of the year in the Township or Village. In reviewing the housing information from the 2011-2015 ACS data, figures show that 546 of the 1,783 total housing units (30.6 percent) in Littlefield Township (figure includes the Village) are vacant for seasonal, recreational, or occasional use. With this in mind, it can be assumed that the Township's resident population increases during the summer months, possibly more than 20 percent during the peak vacation dates. Based on the average household size in Littlefield Township of 2.52, the expected peak seasonal increase would be roughly 1,376 persons. Additionally, many summer

visitors stay at private lodging places, campgrounds, or at the homes of family or friends.

Emmet County is a travel destination for many Michigan residents and visitors throughout the Midwest. The combination of seasonal residences, ski resorts, campgrounds, and outdoor activities/events draws many non-residents into the region. A 2014 report produced by the Michigan State University Land Policy Institute suggests a potential seasonal increase of nearly 20,000 persons over the base population of the County. This increase accounts for seasonal housing, campgrounds, bed and breakfast establishments, cabin/cottage/condo rentals, hotels, motels, and other lodging places. Many of these seasonal visitors are likely to use Alanson and Littlefield Township's recreational facilities and other services during their stay.

Figure 1-1

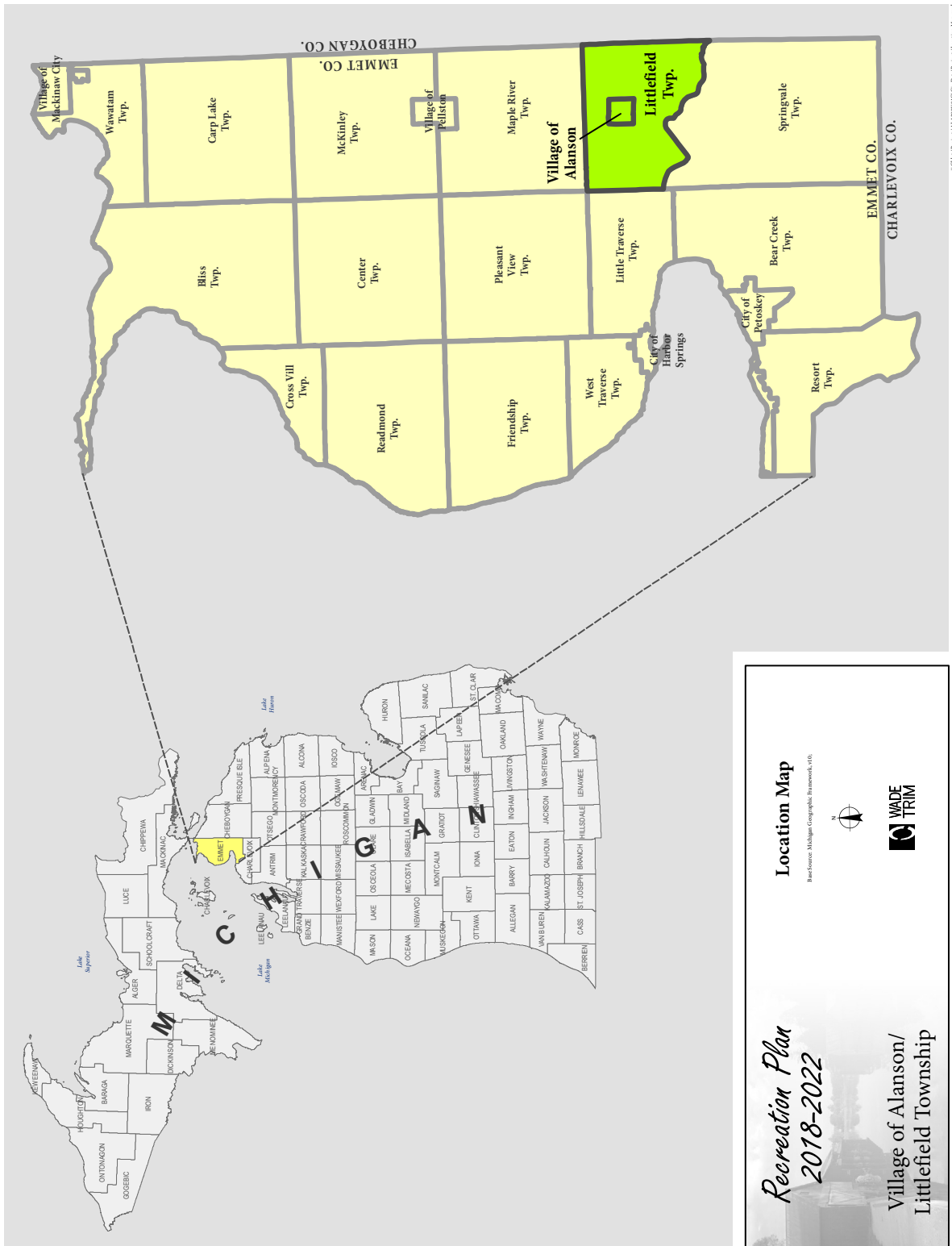


Figure 1-2

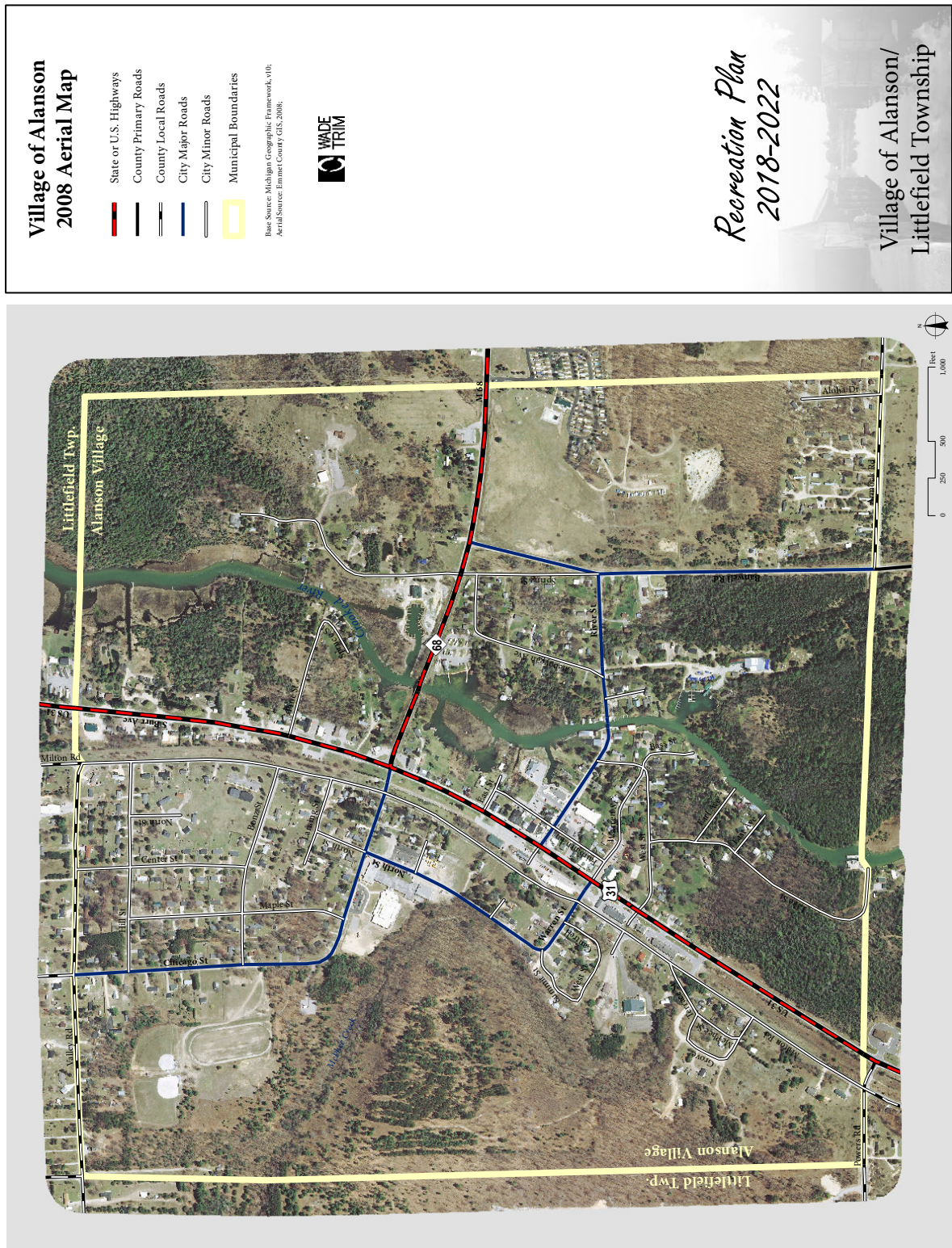
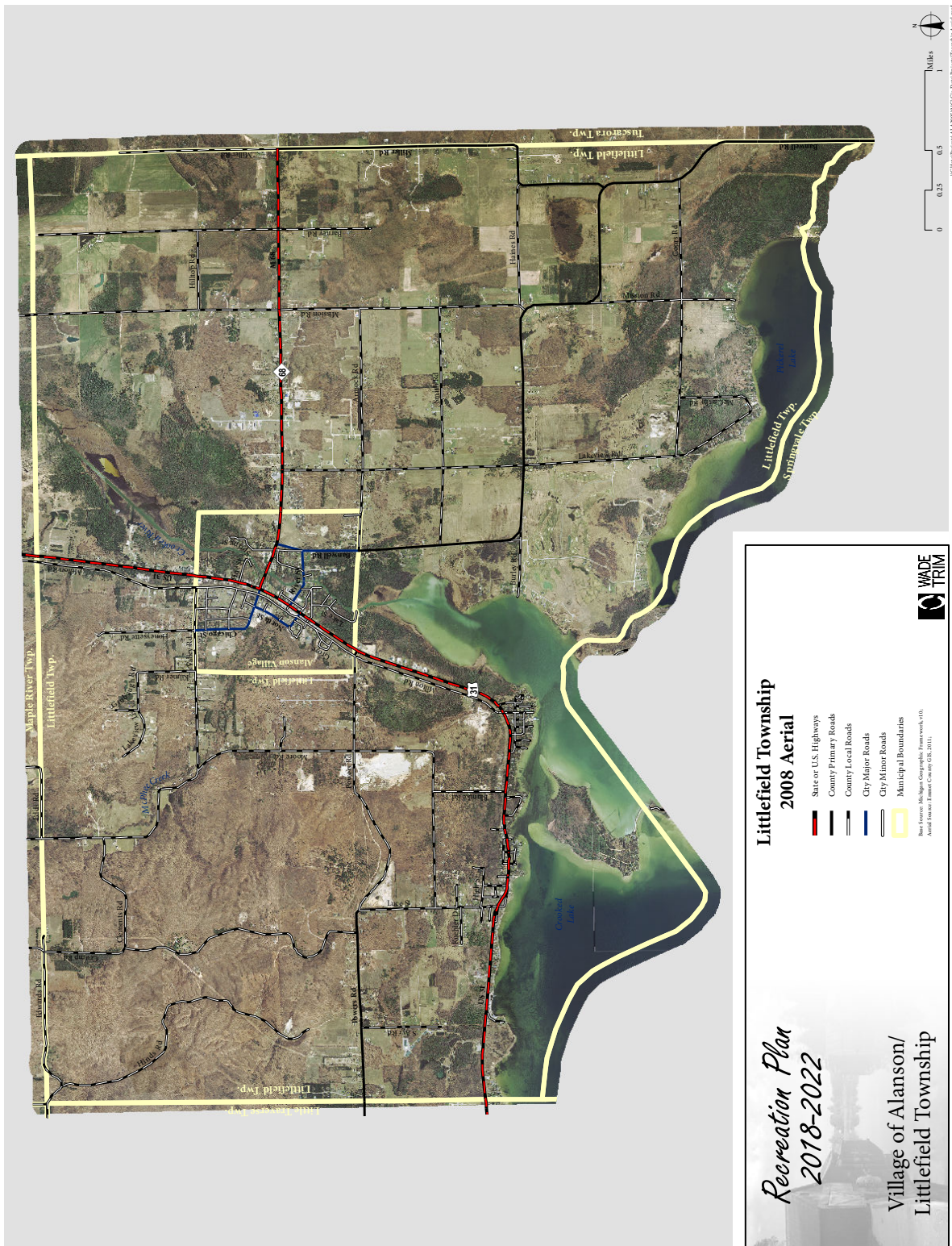




Figure 1-3



This page is intentionally left blank.



## 2

## ADMINISTRATIVE STRUCTURE

### Village Organization

The Village of Alanson was incorporated in June 1882 under the State of Michigan's General Law Village Act. Local government consists of a Village President and Village Council. Additional support is provided through the offices of Clerk, Attorney, Treasurer, Assessor, Zoning Administrator, and Street Administrator. The Village Council has appointed several committees to guide in the delivery of government services. Village committees include parks, ordinances, nuisance, street administration, grants, sewer, finance, and personnel. Because the Village enforces community zoning, the Council also relies on a Planning Commission and a Zoning Board of Appeals.

With regard to the administration of recreational services, the Village Council may be assisted from time to time by the parks, grants, and street committees. An organizational chart for the Village administrative structure for recreational planning and administration is shown as Figure 2-1. While the Council relies on committee recommendations in administrative matters, the Council has final authority. The Village of Alanson does not operate any recreation programs.

The Village employs one full-time Department of Public Works employee and a part-time Park Superintendent for the summer months. They maintain all Village properties, including recreational facilities. Recreation maintenance duties include grass mowing, trash removal, restroom cleaning, snow removal, and general maintenance of equipment and facilities. A summer Bridge Tender is retained under contract to

operate the "Swing Bridge" across the Crooked River at River Street, allowing recreational boat traffic to pass between Burt Lake and Crooked Lake, a major part of the Inland Water Route.

A Village Downtown Development Authority (DDA) was established in 2005 under the authority of Public Act 197 of 1975, as amended. The DDA Plan outlines the following Project Improvements:

- Consultation and Operational Expenditures
- Promotional and Cultural Development
- Street and Sidewalk Improvements
- Parking Expansions
- Streetscape Enhancements
- Safety and Security
- Parks and Recreation
- Construction

### Village Recreation Expenditures

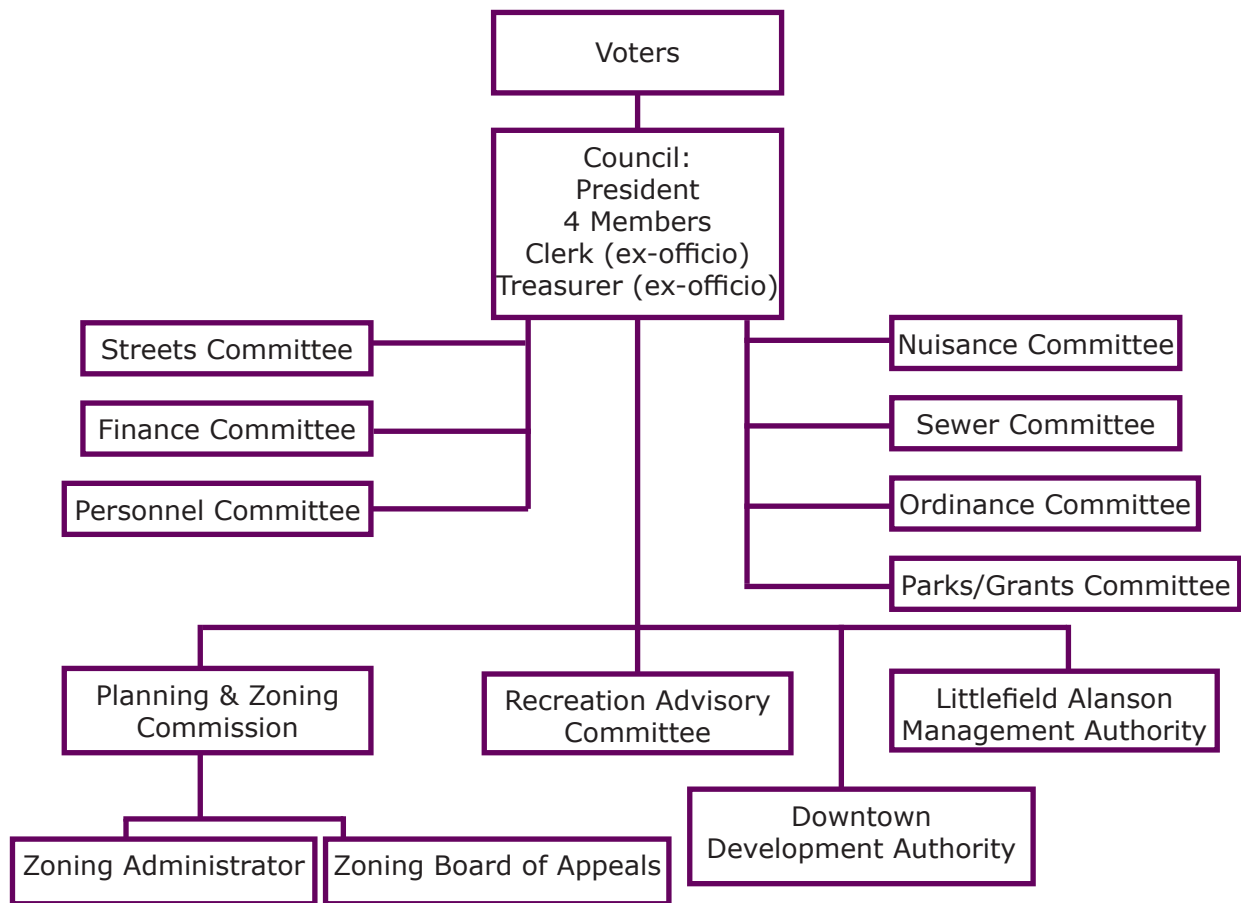
For fiscal year 2015/2016, the Village showed a general fund budget of \$383,433. Of that total budget, the Village paid out \$800 for park wages, \$11,389 for park maintenance and \$13,600 for Bridge Tender from the Major Street Fund.

For fiscal year 2016/2017, the Village showed a general fund budget of \$375,490. Of that total budget, the Village paid out \$800 for park wages, \$2,892 for park maintenance and \$12,900 for Bridge Tender from the Major Street Fund.

The Village expects to continue similar spending on recreational facilities maintenance and improvements



**Figure 2-1 Organizational Chart for Village of Alanson**



in the future and will provide the required local match for grants awarded for recreation capital improvements.

## Township Organization

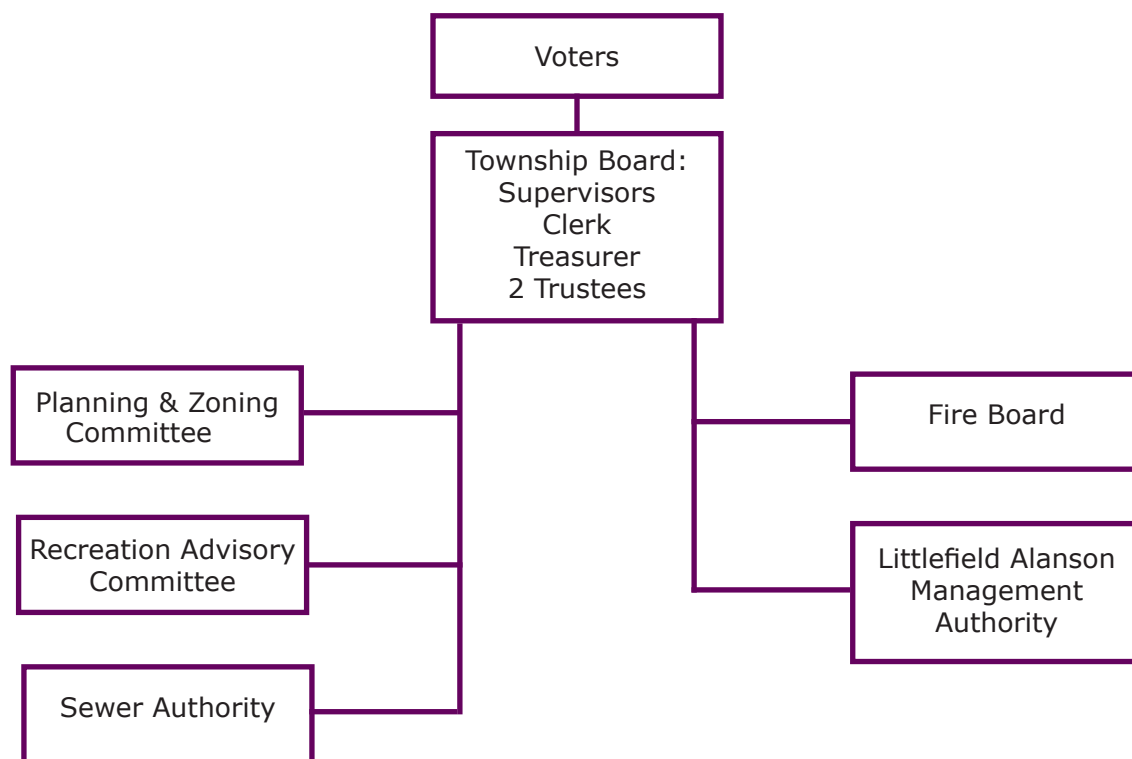
Littlefield Township was organized as a General Law Township in 1874. The five-member governing body, the Township Board, consists of the following elected officials: Supervisor, Clerk, Treasurer, and two Trustees. The Township Board relies on the recommendations of several appointed committees, including planning and zoning, recreation advisory, sewer authority, and fire board. Figure 2-2 illustrates an organizational chart for Littlefield Township. Littlefield Township does not operate any recreation programs, nor does it employ any staff. Rather, park maintenance and other facility maintenance operations are contracted out.

## Township Recreation Expenditures

For the fiscal year ending March 31, 2017, Littlefield Township showed General Fund Revenues of \$473,531 and General Fund Expenditures of \$772,850. On September 30, 2016, the Township acquired the Admiral's Pointe (Hay Lake) Marina with a \$200,000 grant from the MDNR Trust Fund. The Township also received a Waterways Infrastructure Improvements Grant in the amount of \$371,400 on October 18, 2016 to assist the Township in the construction of various boating access site improvements at the Admiral's Pointe (Hay Lake) Boating Access Site. Contracted park maintenance expenditures were \$14,888.00.

For 2017-2018, \$12,000 was budgeted for contracted park maintenance. As of October 31, 2017, contracted

**Figure 2-2 Organizational Chart for Littlefield Township**



## Past MDNR Grants and Other Funding Sources

In the past 10 years, the Village and Township have received several grants and funding related to parks and recreation as follows:

•	4/29/09	Crooked/Pickereel Lake Association	\$1,000	Koboski Property Purchase
•	7/1/09	DNR Grant	\$82,049	Koboski Property Purchase
•	10/30/09	Balance of DNR Grant	\$9,116	Koboski Property Purchase
•	5/13/10	TF09-114 Island Sanctuary Park Boardwalk	\$250,000	Boardwalk, Access, Amenities
•	4/6/10	State of Michigan	\$46	Final Audit - Critical Bridge
•	9/28/10	Village of Alanson DDA	\$10,000	Engineering Services-Sanctuary Island
•	11/23/10	Petoskey-Harbor Springs Community Foundation	\$2,000	Park Enhancements
•	01/01/15	TF15-0218 Hay Lake Water Access Site Acquisition	\$167,800	Crooked River/Hay Lake Property Purchase
•	01/01/16	TF16-0072 Hay Lake Marina Park and Watertrail Trailhead*	\$280,000	Park Development
•	01/01/16	TR16-0073 Blumke to Milton Road Trail Acquisition*	\$99,000	Corridor Property Purchase - Trail Extension

\*At the time of this report, these projects were still in progress

park maintenance expenditures totaled \$11,543. The Township received two grants from the MDNR Trust Fund in 2017. A development grant for the construction of improvements to the Admiral's Pointe (Hay Lake) Marina in the amount of \$280,000 and a trail acquisition grant for the purchase of the railroad grade between Blumke and Milton Roads in the amount of \$99,000.

Littlefield Township expects to continue expending necessary amounts for recreation planning and maintenance. The Township will commit to the required local match for any grants awarded for recreation capital improvements.

## Village and Township Cooperation

The Village of Alanson and Littlefield Township work cooperatively in the provision of several community services including the public sewer system, the fire department, recreation planning and the community building.

### Recreation Advisory Committee

Under the provisions of the Inter-municipality Committees Act (Public Act 200 of 1957, as amended), the Village of Alanson and Littlefield Township created a joint Recreation Advisory Committee "for the purpose of studying area governmental problems of mutual interest and concern" - recreation and parks, in this case.

The Alanson/Littlefield Recreation Advisory Committee consists of two Village Council members, two Township Board members, and one citizen-at-large. The Committee meets monthly and is charged with making recommendations for recreation planning, recreation goal setting and exploring possible funding sources for recreation improvements for both communities. The Village and Township equally share expenses incurred by this Committee.

### Community Building

The Village and Township joined together to establish the Littlefield Alanson Management Authority. The Authority (a legally separate entity from the Township and Village) was created for the construction and maintenance of the Community Building to be used by both governments. The building was financed by the issuance of general obligation bonds, which are now retired. Ownership of the building has reverted from the Authority to the joint property of the Village and Township. The Authority presently maintains the Community Building and invoices the Village and Township. The Township and Village each appoint one member to the two-member Authority Board. Each unit of government contributes one-half of the Authority's annual expenses. The Authority employs one person for building management.

### Alanson Area Public Library

The Alanson Area Public Library, a member of the Northland Library System, is located in the Community Building. The library is open to the public 38 hours each week and is managed by the Alanson Area Public Library Board. The Village and Township equally contribute annual funding to the Library Board, who then pays annual rent to the Alanson Littlefield Management Authority for use of space in the Community Building. Essentially, the Village and Township are providing rent-free space for the library.

## Relationship with Other Agencies and Organizations

The Northwest Michigan Council of Government's function is to retain and strengthen local home rule by coordinating efforts in resolving problems, politics, and plans that are common and regional. Currently, the NWMCOG's staff is involved in the following areas:

- Economic development
- Community development
- Recreation



- Tourism
- Historic preservation
- Transportation
- Land use planning
- Solid waste planning

Technical assistance for local recreation planning and other kinds of help for special recreation projects is sought as appropriate from the following organizations and agencies:

- Oden Community Association
- Harbor Springs Snowmobile Club
- Alanson Beautification Center
- Alanson Improvement Group
- Alanson Women's Club
- North Emmet County Little League Association
- Alanson Area Public Schools
- Emmet County Office of Planning and Zoning
- Emmet County Board of Commissioners
- Michigan Department of Natural Resources
- Michigan Department of Environmental Quality
- Michigan Department of Licensing and Regulatory Affairs
- Michigan State University Extension Service
- USDA Natural Resources Conservation Service
- U.S. Army Corps of Engineers

This page is intentionally left blank.



# 3

## RECREATION INVENTORY

An inventory of existing recreational facilities located in the Village of Alanson and Littlefield Township and surrounding area is detailed in this chapter. Facilities are grouped according to jurisdictional management and operations. Figure 3-1 illustrates the location of recreational sites in the Village while Figure 3-2 displays sites in the Township. Figure 3-3 shows recreation sites operated by Emmet County.

A barrier-free compliance evaluation was conducted for each recreation site under the jurisdiction of the Village of Alanson and Littlefield Township and is included with the description of each site. This barrier-free compliance evaluation utilizes a numerical rating of 1 to 5, based on the following definitions:

1. None of the facilities/park areas meet accessibility guidelines
2. Some of the facilities/park areas meet accessibility guidelines
3. Most of the facilities/park areas meet accessibility guidelines
4. The entire park meets accessibility guidelines
5. The entire park was developed/renovated using the principals of universal design

Finally, this chapter includes an inventory of past MDNR grants that have been received for the Township and Village for recreation purposes.

### Village of Alanson

#### Island Sanctuary Park

This island in the Crooked River is roughly in the center of the Village. Mr. Derry Williams donated the island

to the Village with the stipulation that it never be sold and will become a permanent part of Alanson's park system. In 2009, the Village received a MDNR grant for the development of the park to include a self-propelled chain ferry and docking platform, a parking lot, a boardwalk system on the island, a fishing platform, and gazebo.

Park Type: Neighborhood Park

Size: 1.44 acres

ADA Compliance Rating: 4 – Park boardwalks meet accessibility guidelines.

Opportunities: Wayfinding and interpretive signage; linkages to Morgan Park and potential walkways to the north.

#### Alanson Village Park

This neighborhood park is located directly behind and on the same parcel as the Community Building. Amenities at the park include playground equipment, picnic tables and grills, pavilion, bandstand, two shuffleboards, two basketball courts, horseshoe pit, and tennis court. Portions of the park not developed are wooded. Playground equipment conforms with current safety standards. Rubberized mulch for the surface beneath the playground equipment is in place as a safety surface, but has been displaced over time and is not an accessible surface. The basketball court is treated with a non-slip surface for safety. The most recent park improvements were funded by local government, local organizations, and local grants.



*Park Type:* Neighborhood Park

*Size:* 1.45 acres

*ADA Compliance Rating:* 1 – Limited parking is available, but no handicap parking is marked. The park is generally flat, but no pathways or walkways are provided. Restrooms for the park are available through a rear entrance to the Community Building. The restrooms are not ADA compliant.

*Needs:* All features should be made ADA compliant including parking, pathways/walkways, drinking fountain, and restrooms. The tennis court is still usable, but the surface is beginning to deteriorate. A connecting walkway from Morgan Park is recommended. Wayfinding signage depicting local park and trail networks would be a valuable addition.

#### **Morgan Park**

Morgan Park is located just off River Street, with water frontage on the Crooked River, and features a 24-hour boat dock for seven watercraft, walkway, park bench, two picnic tables, grill and flowing well/drinking fountain. Several mature trees are located on this mini-park site. Plans are in progress to upgrade the boat dock.

*Park Type:* Mini-Park

*Size:* 0.48 acres

*ADA Compliance Rating:* 2 – Parking is on the street and is accessible to the sidewalk. The drinking fountain is not ADA compliant, and no restrooms are provided at this site.

*Needs:* Upgrade walkway to ADA standards, improve landscaping and add in-ground irrigation system. Provide connecting walkway to the Alanson Village Park. Upgrade dock. Develop opportunities for small gatherings and passive enjoyment of the river such as a small pavilion, bench swings, a fire circle, and so on. Provide linkages to Island Sanctuary Park. Wayfinding signage depicting local parks and trail systems would be a valuable addition.

#### **Crooked River Swing Bridge**

Provided as a Crooked River street crossing at River Street, the bridge swings open to accommodate recreational boating traffic. Watercraft use the Crooked River to access Crooked Lake as part of the Inland Water Route, which will be further described in Chapter 4. The Village hires a Bridge Tender to operate the bridge during the regular boating season. Total bridge reconstruction was completed in 2006, with funding provided through the Critical Bridge Program.

*Park Type:* Not a park

*Size:* n/a

*ADA Compliance Rating:* 4 – The newly reconstructed bridge is ADA compliant.

*Opportunities:* Wayfinding signage depicting local park and trail networks. Interpretive signage telling story of Inland Water Route.

#### **Bass Street Property at Crooked River**

This small undeveloped property is located at the end of Bass Street with water frontage on the Crooked River. Two large mature trees are located at the water's edge.

*Park Type:* Not a developed park

*Size:* 0.43 acres

*ADA Compliance Rating:* 1

*Opportunities:* Potential boat dock and riverside boardwalk and/or overlook. Add two picnic tables. Wayfinding signage depicting local park and trail networks. Interpretive signage telling story of Inland Water Route.

### **Littlefield Township**

#### **Hay Lake Marina Park**

In 2016 The Township acquired this waterfront park that provides access to the Crooked River/Hay Lake waterway. The site is currently undergoing development using a grant from the MDNR. The

former private marina will serve as a trailhead for the Inland Waterway Trail. Other developments to the now public marina include a small boat launch, universally accessible canoe/kayak launch, elevated wetland overlook, water trailhead with car-trailer and car parking, and universally accessible restroom/shower building and amenities.

*Park Type:* Community Park

*Size:* 14.75 acres

*ADA Compliance Rating:* 4 – When park improvements are completed, the park amenities will meet accessibility guidelines

*Opportunities:* Current efforts are underway to redevelop the former private marina.

#### **Walter Dow Roadside Park**

This mini-park has been under Township jurisdiction since 1999, having been obtained from the Emmet County Road Commission. It is located on Crooked Lake in the unincorporated community of Oden, at the intersection of U.S. 31 and Rose Street. The park's main attraction is a swimming beach on Crooked Lake. In addition to swimming, park visitors often use the beach as a wind surfing launch site. The park also features a stone and brass memorial to Walter Dow. The Township recently installed a new well and drinking fountain with local funds and paved the parking lot. The Township provides a portable restroom during the summer season.

*Park Type:* Mini-Park

*Size:* 0.29 acres

*ADA Compliance Rating:* 1 – Limited parking is available, but no handicap parking sites are marked. The land is generally flat, but no walkways or pathways are provided.

*Opportunities:* Provide ADA access to water's edge from parking. Explore means to control parking.

#### **Woodruff Park (Roadside Park)**

The Township is currently seeking to acquire this property from the MDOT, which is a small roadside park on the north side of U.S. 31 in Oden. The park is designed for passive recreation and includes a picnic area, flowing well/drinking fountain and a memorial to Oden residents who have served in the Armed Forces. The park is wooded with cedar and birch trees.

*Park Type:* Mini-Park/Roadside Stop

*ADA Compliance Rating:* 1

*Size:* 0.76 acres

*Opportunities:* Improve accessibility; potential to improve veteran's memorial and rest stop functions.

#### **Oden Gazebo Park**

Littlefield Township acquired the Oden Gazebo from the Oden Community Association in 2013. Surrounding properties from private owners were acquired between 2014-2015 to transition the area into a larger mini-park. This site is a passive recreational site north of Oden Road, between Luce and Main streets, and features sidewalks and a gazebo. The park adjoins the North Western State Trail. The gazebo has a new foundation, roof and lighting and was recently repainted with local funds.

*Park Type:* Mini-Park

*ADA Compliance Rating:* 1

*Size:* 0.89 acres

*Needs:* Update access to comply with ADA standards. Restore gazebo. Restore flowing well.

#### **Blumke to Milton Road Trail**

The Township is currently in the process of acquiring this 1/2 mile-long corridor from private property owners, which is immediately north of the North Western State Trail. In the winter, the trail can be used by snowmobiles and offers protection away from the highway. Preserving this open space as part of a

recreation trail will protect the scenic character of the area for future generations. The property purchase is being funded, in part, through a grant from the MDNR.

*Park Type:* Not a developed park

*Size:* 5.97 acres

*ADA Compliance Rating:* N/A

*Opportunities:* Future development of a non-motorized trail realignment connecting to the North Western State Trail.

### **Littlefield Township Fire Department**

Constructed in 2006, the Township Fire Department building is located on approximately eight acres in the Village of Alanson near the intersection of West and Cantrell Streets.

*Park Type:* Not a developed park

*Size:* 7.67 acres

*ADA Compliance Rating:* 4 – For parking to building.  
1 – No accessible access to site.

*Opportunities:* Develop site as passive park with local trails and connections to regional trails. Consider facilities for group gatherings, fitness, health and play.

## **Joint Village and Township**

### **Village/Township Community Building**

The Community Building is jointly owned by the Village and Township. The organization and funding for the Community Building are discussed in Chapter 2. Both units of government use the building for office space and meetings. The Community Building is made available for use by public service groups, The Alanson Area Public Library is located in the building. The building is available for rental by residents for private parties, receptions, reunions, showers, and the like. The building is also provided at no cost for annual special community events, such as Fourth of July Celebration, Holiday Community Sing-Along, Santa Claus Visit, and Boy Scouts Fund Raiser Dinner. In all,

over 20 different entities use the building during the course of a year.

*Park Type:* Not a park

*Size:* 1.01 acres

*ADA Compliance Rating:* 2 – Handicap parking is designated. The building is a one-story structure. The restrooms and front door are semi-accessible (could be used with assistance).

*Needs:* Building and access to building should be totally upgraded to ADA compliance.

## **Alanson-Littlefield Public Schools**

### **School Site**

Located in the Village of Alanson at the corner of Chicago Street and North Street, the school provides K-12 education for approximately 500 students from the Village of Alanson, Littlefield Township, and a portion of Maple River Township. The school also owns 80 acres in Section 8 and 40 acres in Section 9 in Littlefield Township. These parcels make up the school forest and are undeveloped. However, the school provides snowmobile trail right-of-way through the school forestland under an agreement with the Harbor Springs Snowmobile Club.

In addition to the educational facilities, the school site features an indoor gymnasium and playground. The gymnasium is used for K-12 physical education class and school organized sports. Because the gymnasium is generally fully scheduled for school activities, it is rarely available for community use. Should private funding be found, the school wishes to build another gymnasium, which would relieve some of the scheduling conflicts and make it available for community use, such as for walking during the winter, adult basketball, exercise classes, and similar uses. The school also provides space for a structured and organized after school program.

*Park Type:* Not a park

*Size:* 9.89 acres

*Opportunities:* Explore cooperative ventures between school system, Township, Village and private entities to build second gymnasium.

### **School Ball Fields and Track**

The Alanson-Littlefield Public School maintains a large property on the west side of Chicago Street, in close proximity to the school building, which features a cinder track, softball field and baseball field. The cinder track is only used for practice and is not suitable for sanctioned events. The ball fields are used for organized Little League play in addition to school functions.

*Park Type:* Neighborhood Park

*Size:* 20.57 acres

*ADA Compliance Rating:* 1

*Opportunities and Needs:* Needs include compliance with ADA standards, ball field upgrades to fencing, field turf and infields, and spectator facilities. Opportunities are numerous since considerable open, undeveloped space is available for activities such as a skate park, ice skating, recreational fields, larger group gatherings, walking loops, and so on.

### **Alanson Beautification Center**

The Alanson Beautification Center, a non-profit organization, was established in 1982 for the purpose of developing the Hillside Garden in downtown Alanson. The Center has approximately 20 active members and meets monthly. Funding is obtained through membership dues, donations, grants, memorial funds and fundraisers.

### **Hillside Garden**

The award-winning site is adjacent to the west side of the former railroad grade and consists of landscaped gardens, two stairways, compacted gravel pathway,

flag pole, memorial plaque, automated irrigation and lighting. The Village of Alanson provides an extensive lighted Christmas display at the Hillside Garden during the holiday season, having purchased the display items and paying for the electricity.

*Park Type:* Mini-Park

*Size:* 1.32 acres

### **Oden Community Association**

The Oden Community Association, an organized group of property owners in the community of Oden at Crooked Lake, owns and operates several recreational facilities in the Oden area.

### **Oden Community Association Park**

This site is located in Littlefield Township's Section 17 at the corner of Luce Street and Moore Road.

The park contains a ball field with dugouts, fencing, bleachers and manual scoreboard, which is used by the local Little League teams, and a two-hoop basketball court. The park is maintained by volunteers from the Association, Little League, Village and Township.

*Park Type:* Neighborhood Park

*ADA Compliance Rating:* 1

*Size:* 5.71 acres

*Needs:* Update access to comply with ADA standards.

### **Oden Community Hall**

The Association also owns the Oden Community Hall, a former school, on Luce Street. It is used for community gatherings, but is not open during the winter months.

*Park Type:* Not a Park

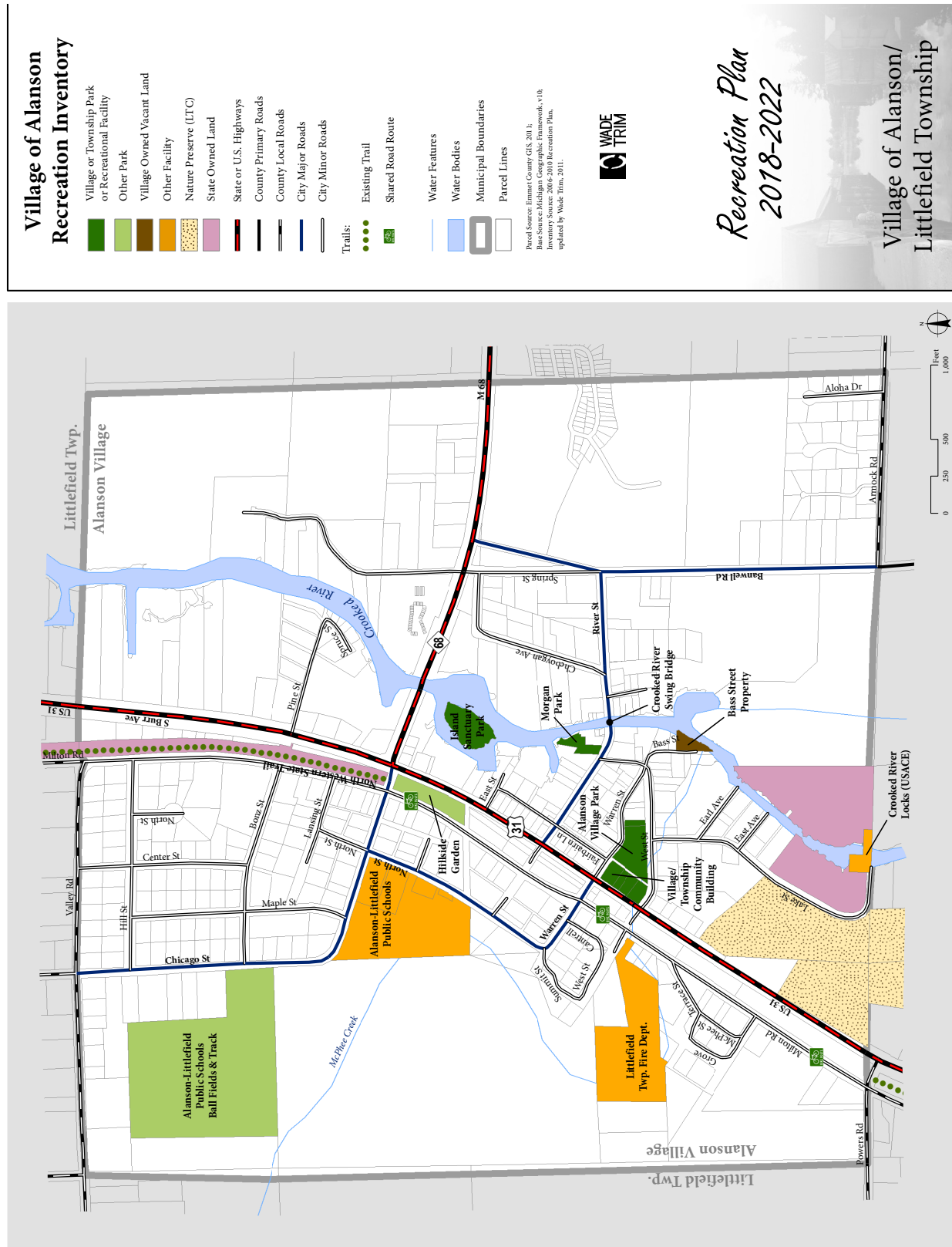
*Size:* 0.89 acres

### **Street End Access to Crooked Lake**

Several streets dead-end at the Crooked Lake shoreline in the unincorporated community of Ponshewaing,



Figure 3-1



including Park Street, Birch Street, Lake Street, Wildmen Street and Jefferson Street. Though they are not “developed,” they are often used for small watercraft launch and swimming. These sites fall under the jurisdiction of the Emmet County Road Commission.

*Opportunities:* Consider and explore opportunities to acquire additional land at these sites so to better accommodate boat launching, swimming access, and so on. Wayfinding and interpretive signage about local park, boating and trail networks and facilities and interpretive signage about the Inland Water Route, history of the lakes, and so on are potentially valuable additions.

## Little Traverse Conservancy Nature Preserves

There are currently eight Nature Preserves within the Village of Alanson/Littlefield Township jurisdiction. These Preserves are itemized below with a brief description of listed characteristics as provided by the Conservancy:

- *Oden Island Preserve*  
50 acres (Township contributed to acquisition of Preserve)  
1 mile frontage on Crooked Lake  
Large old-growth trees  
Fragile wetlands  
Trails
- *Black Hole Preserve*  
5.5 acres (Township contributed to acquisition of Preserve)
- *Ponshewaing Preserve*  
21 acres
- *Clements Preserve*  
16 acres  
Views of Crooked Lake
- *Kreag Preserve*  
18 acres

- *Drayton Preserve*  
40 acres  
Primarily wetlands
- *Lossing-Harrington Preserve*
- *Inland Waterway Nature Preserve*

These Preserves significantly contribute to the preservation and conservation of the area’s natural resources and to the integrity and continuity of open, wild space that benefits wildlife, biodiversity and water resources. The benefits to direct, active recreation are limited. Their critical value from a recreation perspective is in maintaining the characteristics and integrity of the environment that draws people to this area.

## Emmet County

The 2009 Emmet County Recreation Plan provides a detailed analysis of the opportunities available for recreational activities. The recreation inventory in this document emphasizes the importance of the land resource assets, protecting wildlife habitat, protecting community open space, and ensuring scenic views are preserved. The following is a description of each County operated recreational facility.

### Camp Petosega

This 292-acre parcel was acquired in 1992 and is considered to be the “flagship” park in the county park system. The northern portion of this park is located in Littlefield Township and the southern portion in Springvale Township. Existing facilities include a recreation hall, bathhouse, cabins, nature trails, 2,500 feet of Pickerel Lake beach, tennis courts, campground, a trout stream, as well as habitat for various species of wildlife. Since it’s opening as a county park, Camp Pet-O-Se-Ga has been very successful, and the cabins and recreation hall are rented steadily throughout the summer months. The campground is also used to capacity on some weekends.

Village of Alanson/Littlefield Township  
Recreation Plan 2018-2022



*Park Type:* Community Park

*Size:* 292 acres (Approximately 150 acres within Littlefield Township)

### **Cecil Bay Park**

This 907-acre park along Lake Michigan in Wawatam Township includes over one mile of shoreline as well as a major river within its perimeter. The park includes fragile dune and river mouth environments. The park also includes a picnic shelter, a parking area for day visitors, and controlled access to the river to protect the banks.

### **Maple River Property**

This 320-acre parcel in Maple River Township currently has no development, but does have the Maple River traversing the entire property, offering opportunities for fishing and wildlife enjoyment.

### **Watson Conservation Property**

Located halfway between Harbor Springs and Petoskey along M-119, the County and Little Traverse Conservancy jointly manage this 70-acre property. The property has nearly flat fields, formerly part of a farm, and slopes southward toward Round Lake making this a fragile and important watershed under the conservancy's care. Presently the parcel contains public administrative buildings and offices housing the Sheriff's Department, Planning and Zoning Department, Building Department, Health Department, and others. The site also has a domed hockey arena with one sheet of ice.

### **Headlands Park**

This 550-acre park on the Straits of Mackinac was acquired in cooperation with several entities including: the Village of Mackinaw City, Wawatam Township, Emmet County, The Little Traverse Conservancy, The Michigan Natural Resources Trust Fund, The Schott Foundation, and The McCormick Foundation.

*Village of Alanson/Littlefield Township*

The property offers the opportunity to experience pristine woodlands, almost two miles of undeveloped Lake Michigan shoreline, many species of rare and threatened plants, a small lake, and 100-foot ridge that parallels part of the shoreline. The property also includes a beach house, guesthouse, nature trails, as well as a paved basketball court.

### **Emmet County Community Center (see Figure 3-4)**

The Community Center site contains about 23 acres of land situated along U.S. 31 on Petoskey's west side. Emmet County owns the land and the site is used for numerous functions throughout the year, including the Emmet/Charlevoix County Fair, horse and livestock shows, antique shows, animal clinics, soccer tournaments, farmer's market, and various other civic, government, and private group meetings, shows, exhibitions, and convention uses.

## **City of Petoskey Regional Parks**

The City park system is well developed and offers a variety of recreational programs and activities for people throughout the County. Selected parks are highlighted below to identify key features attracting participants and visitors.

### **Bay Front Park**

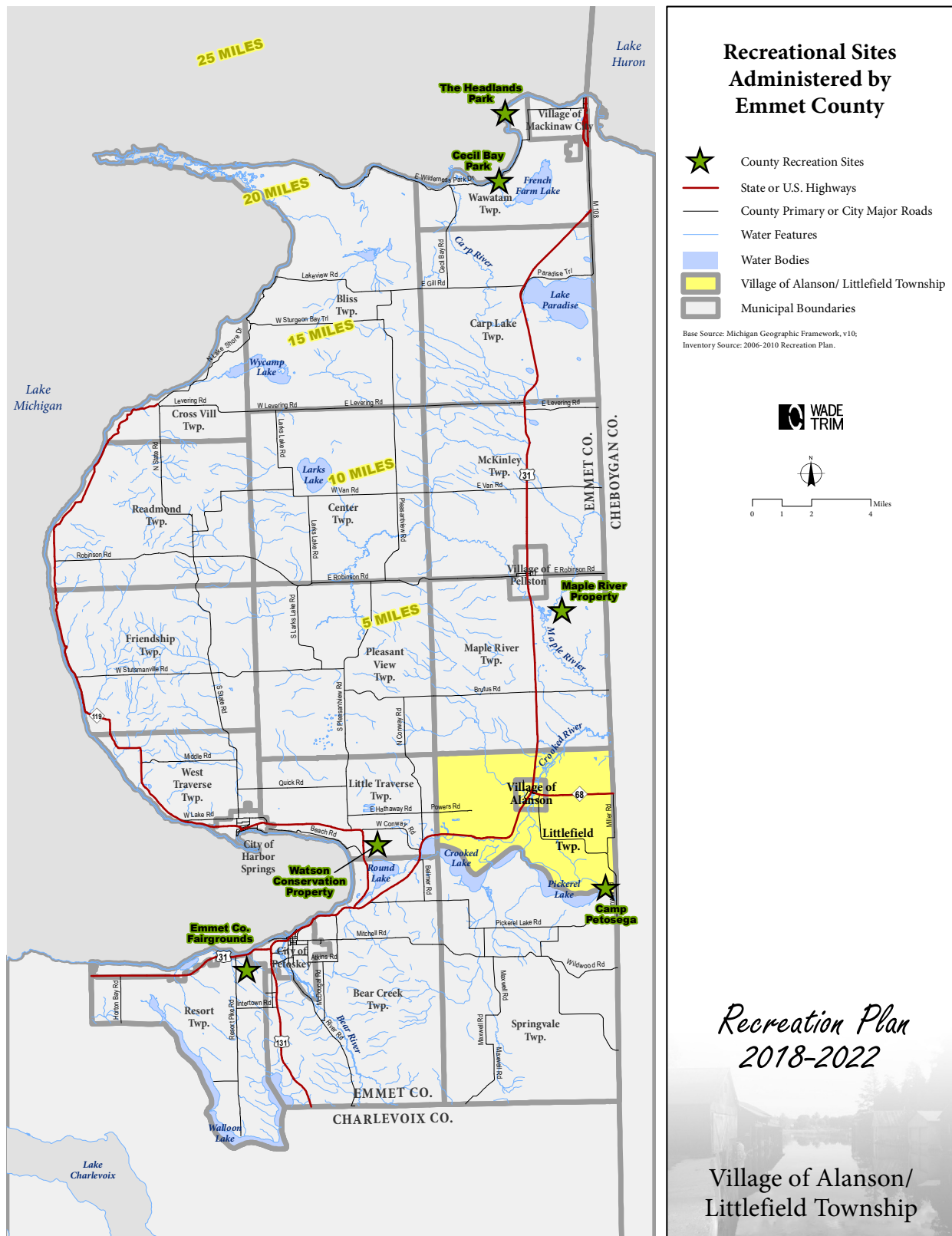
This 30-acre park features 4,800 feet of Lake Michigan shoreline and contains a 100-slip marina, bike path, arboretum, museum, softball field, concession, and children's playground. Special events and concerts are held in two, designated festival areas. The City Hall Complex is also located within the park.

### **Magnus Park**

This park features a 72-site modern campground on 21.2 acres of land located at the end of West Lake Drive in Petoskey. The campground also has water/sewer hookups and shower facilities for campers. There is about 1,000 feet of available shoreline frontage along Little Traverse Bay.



Figure 3-3



### **Winter Sports Complex**

This complex is very unique to winter sports facilities in northern Michigan. The complex offers a speedskating and outdoor skating rink, skate rental, hockey programs, downhill skiing, sledding, concession, and warming building. Summer programs and facilities include day camps and soccer fields.

### **Bear River Park**

This scenic park offers 1.8 miles of frontage along the Bear River, where it empties into Little Traverse Bay. The park has both walking and cross-country ski trails in the downtown area for people to enjoy.

### **River Road Sports Complex**

This 60-acre site features a Frisbee/Disc golf course, three soccer fields, adult softball field, and canoe launch for access to the Bear River.

## **North Western State Trail**

This trail consists of 32 miles that passes through the communities of Petoskey, Alanson, Pellston, and Mackinaw City. Completed in 2016, the trail section between Petoskey and Alanson is composed of asphalt and from Alanson to Mackinaw City, the trail is a packed crushed limestone surface. The trail is available for non-motorized users year-round, and snowmobilers can access the trail from December 1 to March 31. It runs along the former Grand Rapids and Indiana line of the Pennsylvania Railroad that opened in 1882.

The trail also connects to other regional trails. The northern trailhead in Mackinaw City accesses the North Central State trail which runs south to Gaylord, and also creates a connection to the North Eastern State Trail that runs to Cheboygan. From Petoskey, users can connect to the Little Traverse Wheelway which connects to Charlevoix. In all, the trail creates a regional connection that allows recreational users travel from Lake Huron to Lake Michigan by trail.

## **State of Michigan**

The State of Michigan's Department of Natural Resources and Environment (MDNR) owns, operates and maintains (either independently or under cooperative agreements with other organizations) several natural resource related recreation facilities in or near the Village of Alanson and Littlefield Township. The most heavily used sites are detailed below.

### **Crooked River Locks**

The Crooked River Locks located just inside the Village's southern boundary allows the passage of recreational and other boating traffic between Crooked Lake and Burt Lake. Emmet County sub-leases the lock from MDNR who, in turn, sub-leases the lock from Corps of Engineers. A new consortium including Emmet County, Littlefield Township, Little Traverse Township, Bear Creek Township, Springvale Township and the Village of Alanson (Crooked River Lock Consortium) has formed to achieve the following objectives:

- Promoting the Crooked River Lock
- Supporting the continuation and improvement of the Crooked River Lock
- Protecting property values in the communities surrounding the Crooked River Lock
- Enhancing the economic impact of the Crooked River Lock

The Little Traverse Bay Bands of Odawa Indians and the Pickerel Lake - Crooked Lake Association will be requested to appoint one member each to the Consortium Board. It is the intent of the Consortium to work toward these objectives in cooperation with the United States Army Corps of Engineers and the Michigan Department of Natural Resources.

The Village of Alanson maintains the street to the lock and empties the trash receptacle. The Village and Littlefield Township recognize this location as an

opportunity for the acquisition of adjacent lands for the development of a park and/or boat launch.

### **Oden Fish Hatchery**

The Oden State Fish Hatchery is operated by the MDNR at a site in Section 18 on the north side of U.S. 31. The hatchery has been completely renovated. A new main hatchery building, manager's residence, broodstock building, raceways, wastewater treatment facilities, and retention pond are among the project improvements. The facility is open to the public for observation.

The "Friends of Oden Fish Hatchery Visitor Center" sponsor an annual free-fishing weekend in February. This ice fishing event is focused on children in grades K-8. Fishing gear, bait, and refreshments are provided. The fishing takes place on Crooked Lake.

### **State Forestland**

The State also owns 720 acres of state forestland in the northwestern portion of Littlefield Township. These lands are open to the public for recreational uses, such as hunting, hiking, sightseeing, photography, and nature study. Snowmobile trails pass through this land.

### **State Parks**

Wilderness State Park encompasses approximately 8,000 acres of land in northern Bliss Township with access to Lake Michigan, and is located approximately 11 miles west of Mackinaw City and less than 40 miles from Alanson. The park offers 250 modern campsites, swimming, hiking, picnicking, boating, hunting, playground, fishing, mountain biking, and cross-country skiing.

Petoskey State Park is located six miles from Petoskey on M-119 between Petoskey and Harbor Springs in northern Bear Creek Township, approximately 15 miles from Alanson. This 304-acre park with access

to Lake Michigan's Little Traverse Bay has 170 modern campsites, sandy beach, swimming, hiking, picnicking, biking, cross-country skiing, and playground.

Burt Lake State Park is located in Indian River on Burt Lake, approximately 10 miles west of Alanson. The park features 374 campsites, one mini-cabin, four modern toilet/shower buildings, 2,000 feet of sandy beach and a one-mile hiking trail. Activities available include boating, fishing, swimming, picnicking, hiking, and cross-country skiing.

## **Private Recreational Facilities**

Nearby privately owned commercial recreational facilities in Alanson and Littlefield Township are shown on the next page in tabular format.

## **Americans with Disabilities Act Compliance**

With the passage of the Americans with Disabilities Act of 1990 (ADA), all areas of public service and accommodation became subject to barrier-free requirements, including parks and recreation facilities and programs. The ultimate goal is to provide recreation opportunities that include everyone regardless of physical or mental impairment.

When evaluating the accessibility of parks and facilities, barriers should be recognized from the perspective of the participant. These perspectives aid in preparing the design and planning future improvements to both current and existing facilities. Therefore, we can determine whether a site, building, and/or facility is in compliance with the Americans with Disabilities Act Accessibility Guidelines.

Perspectives to Consider:

- Could a person with vision impairment have a reasonable means of identifying the facilities?
- If a person is physically disabled, is there a means to access all facilities and if there are barriers, is an alternate route available?

## Private Recreational Facilities

Name	Location	Amenities
El Rancho Alanson Campers Country Club	Littlefield Township, Section 10, south side of M-68	137 campsites, permanent & transient, full hook-up, swimming pool, 2 tennis courts, 3 shuffleboards, 2 horseshoe pits, playground
Crooked River RV Park	Alanson, Spring St. & M-68	25 sites, full hook-up, 2 boat docks
Spanky's	Alanson, U.S. 31	Sporting goods sales, watercraft rentals
Windjammer Marina & Sports Center	Littlefield Township, Section 18, U.S. 31 (Oden)	Recreation equipment sales, watercraft sales and rentals, boat launch, dock and storage
Ryde Marine	Littlefield Township, Section 16, Ponshevaing	Watercraft rental, boat dock and storage
Hidden River Golf & Casting Club	Maple River Twp., 5 miles north of Alanson	18-hole golf course, food service, driving range, pro shop and golf lessons
Maple River Golf Course	Maple River Twp., 3 miles north of Alanson	2 18-hole golf courses, restaurant, lounge, driving range, golf lessons, and pro shop
Numerous restaurants and resorts	Throughout Alanson and Littlefield Township	Food service, lodging, water-related recreational features

- If a person has a reading disability, could the person recognize standard symbols indicating parking, restrooms or trailways?
- If a person uses a walking aid such as crutches or braces, could the person participate with a group in facilities and move from the arrival place (parking area) to the activity area?

Consideration should also be given to accessibility for people with physical limitations that are not considered handicaps, but are increasingly prevalent in a society with a growing number of aging but active adults. An evaluation of the Village of Alanson and Littlefield Township parks and recreation system accessibility to persons with disabilities has been conducted as a

component of the recreation inventory found in this chapter. Each site was assessed relative to accessibility status, and it is noted under the discussion for each site in this chapter.

### Transition Plan

Much of the transition plan for the Village and Township consists of removal of small-scale accessibility barriers, which is readily achievable through using general fund expenditures. This would include the systematic upgrade of play areas, the removal of uneven surfaces and sidewalk obstructions, the placements of accessible parking space signage, and the procurement of wheelchair accessible picnic tables, and the provision of accessible pathways to all facilities.



Capital improvement expenditures are targeted for more comprehensive accessibility remediation projects, which will be incorporated into the overall improvements of existing facilities. All new playground equipment, site furnishings, landscaping, and facilities included in the capital improvements plan should be designed and installed in compliance with the most current federal, state and local accessibility standards.



# 4

## RESOURCE INVENTORY

### Water Resources

One of the most valuable natural resources of the Village of Alanson and Littlefield Township is water. The Township is located within the Cheboygan watershed, and its lands drain directly into three water courses: the Crooked River, Pickerel Lake, and Indian River. Figure 4-2 illustrates watershed boundaries and drainage courses within Emmet County.

Both groundwater and surface water are vital resources within the Village and Township. The two major surface water resources in Littlefield Township are Crooked Lake and Pickerel Lake, in addition to the Crooked River. These water resources are an important component of a popular natural feature, the Inland Water Route. The waterway runs from Crooked and Pickerel Lakes to Burt Lake via the Crooked River. From Burt Lake, the waterway enters Mullet Lake by way of the Indian River. Leaving Mullett Lake at the north end, the waterway terminates at Lake Huron, via the Cheboygan River. The waters of these resources are very important to the Northern Lower Peninsula Region and contribute to recreational activities such as fishing, boating, swimming and wildlife/scenic viewing.

### Fish and Wildlife

Fish and wildlife resources are fairly abundant in the community and in Emmet County, in general. Fish and wildlife are a critical component and barometer of the area's environmental health and integrity. Therefore, wildlife management practices have a direct bearing on recreation.

Wildlife found in this portion of Emmet County include deer, bear, fox, coyote, bobcat, rabbit, wild turkey, raccoon, grouse, woodcock, squirrel, and migratory waterfowl, as well as numerous songbirds, small mammals, reptiles and amphibians. Crooked Lake is noted for its abundant swan population. Major fish species found in the Township's waterways include varieties of trout, pike, bass, perch, walleye, and assorted panfish.

Figure 4-1

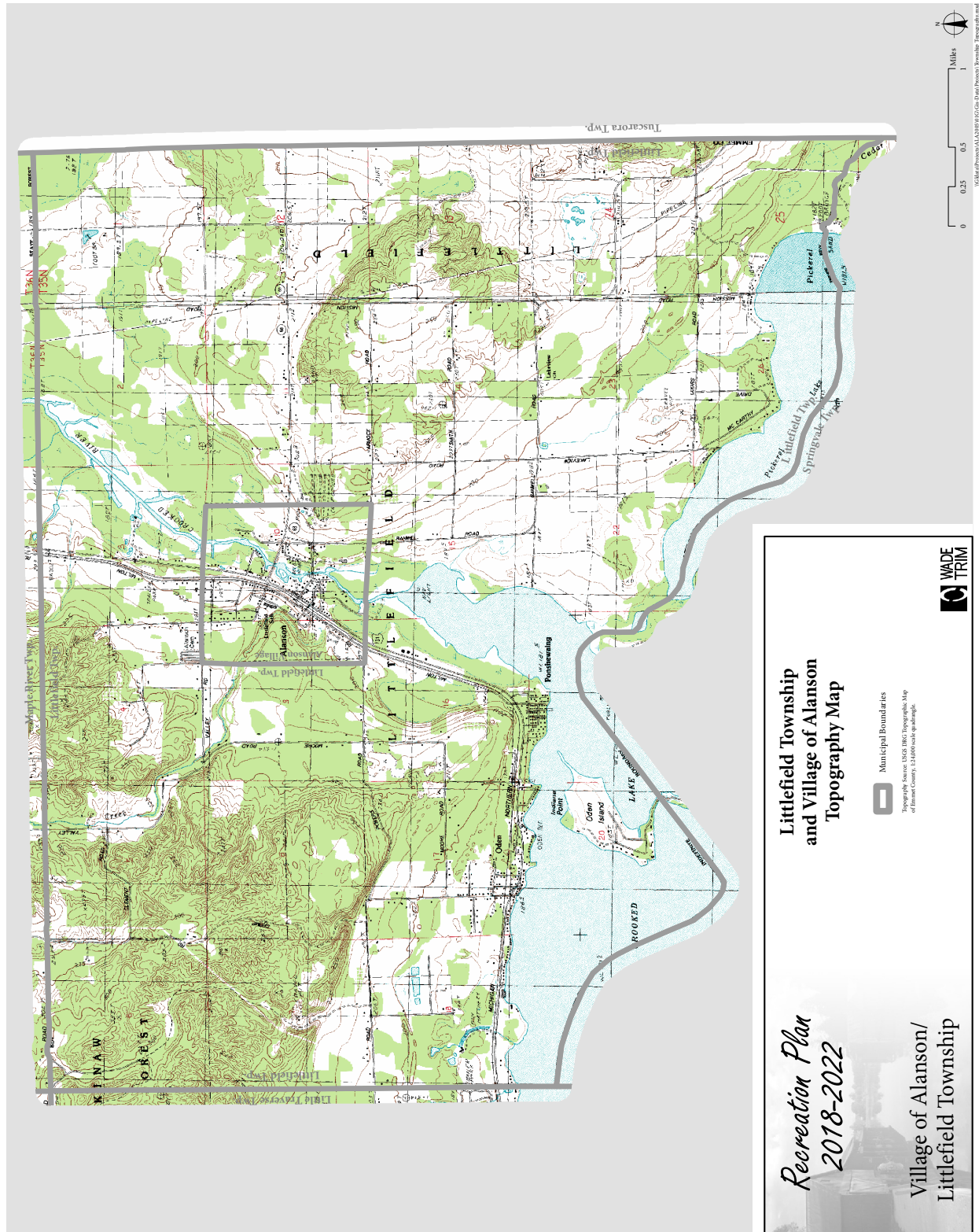
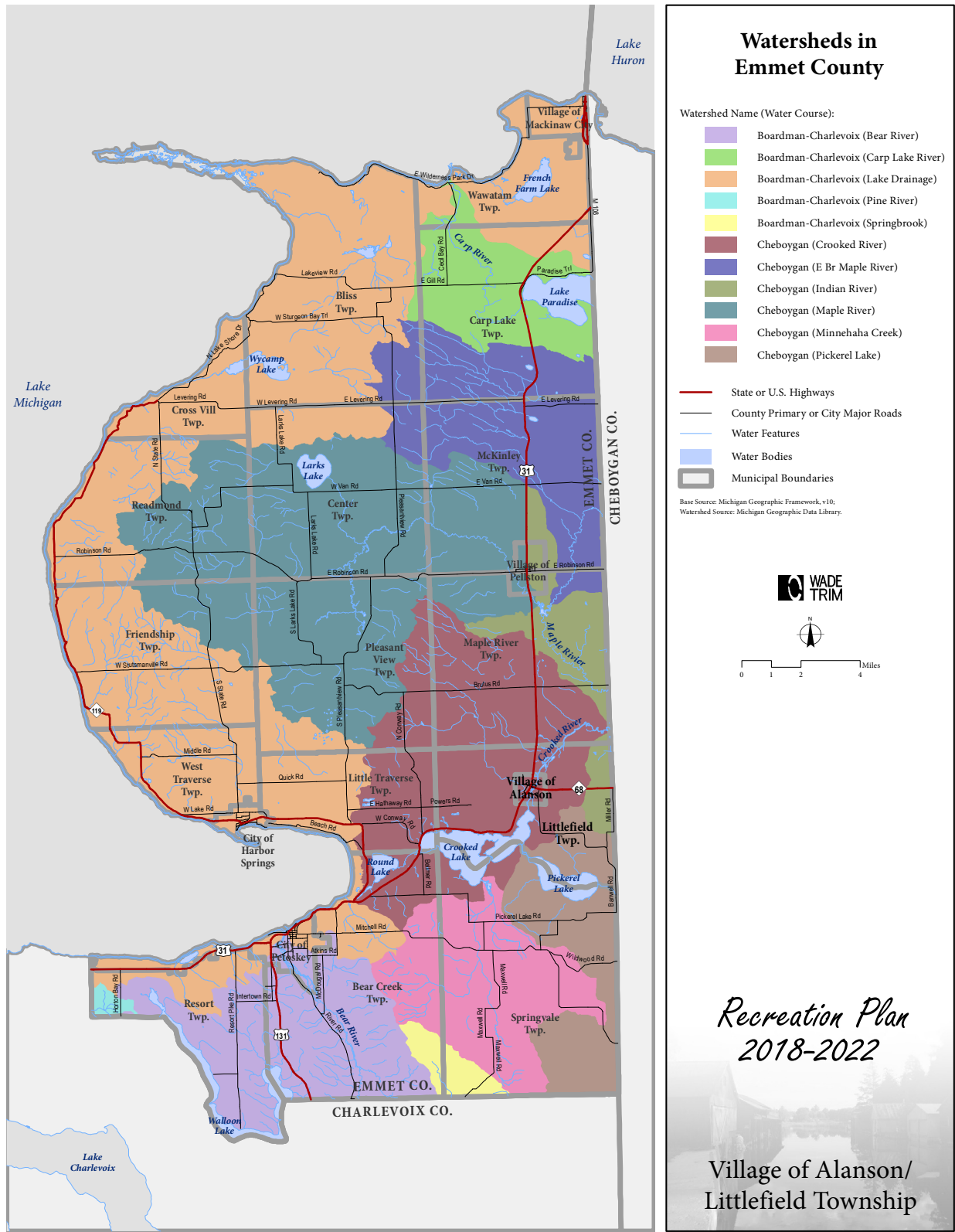


Figure 4-2





This page is intentionally left blank.



# 5

## DESCRIPTION OF THE PLANNING PROCESS

The Village of Alanson and Littlefield Township have consistently engaged in recreation planning over the past decade. The Village Council and the Township Board developed a joint recreation plan in 2001, both appointing members to the newly-formed Alanson/Littlefield Recreation Advisory Committee. Wade Trim assisted in preparing the 2001, 2006, and 2012 plans. This current plan update is also being prepared with Wade Trim assistance.

Upon completion of this review period, the plan was then presented at a public hearing on February 22, 2018. With no further input received at this public hearing, the plan was adopted by both the Village of Alanson and Littlefield Township on February 22, 2018.

This 2018 Plan is based on the 2012 Plan, and outdated sections have been revised to current conditions. The community description sections have been updated utilizing information from the 2011-2015 American Community Survey 5-Year Estimates and other resources as necessary.

The Township Supervisor and Village President have provided updates to their records of budget and expenditures. The Village identified all grants, donations and funding sources that were used over the past five years for recreation purposes. The public was invited to give input through an online recreation needs survey. This part of the process is described in Chapter 6.

A draft plan was made available for public review and comment for a minimum period of 30 days.

This page is intentionally left blank.



# 6

## DESCRIPTION OF THE PUBLIC INPUT PROCESS

Public input during the development of this updated Recreation Plan was primarily sought through two means: a recreational needs survey and a public hearing. In particular, the Alanson/Littlefield Parks and Recreation Survey provided key insight into strengths, weaknesses, needs and opportunities related to recreation within the Village and Township.

### Alanson/Littlefield Parks and Recreation Survey

Below is a summary of the results of the recreational needs survey. The detailed survey results summary is provided in the Appendix.

Participants were first asked to consider whether additional recreation programming is needed within the community (for the purposes of the survey, the “community” represented both the Village and the Township). Nearly 60% of the respondents felt that “somewhat more programs, activities and facilities are needed”, while an additional 25% felt that “many more programs, activities and facilities are needed.” Suggestions for additional programs, activities or facilities included:

- More sidewalks, trails and trail amenities, as well as bike/pedestrian safety improvements (US-31 trail crossing)
- Winter trails
- Special events (i.e., craft fair, fishing tournament, community dinner/picnic, Christmas events, children’s events)
- Fitness programming
- Educational programming



- Youth programming
- Sports programming (i.e., basketball, tennis)
- Public beach on Crooked Lake
- River/lake access facilities and amenities
- Indoor recreation facilities/recreation center
- Community garden
- Pickleball courts
- Baseball fields
- Restroom at the Village park
- Playground in Oden
- Skate park

Related to the number of parks in the community, just over 50% of participants felt that “somewhat more parkland is needed”, while 30% of participants felt that “enough parkland is available now.” When asked if there was a specific location in the community where more parkland should be developed, responses included:

- Lakefront/riverfront
- Within the “Oden Marina District”

- Outside of the Village in the rural areas of the Township
- Next to the old gazebo off of US-31
- Additional land for winter trails/nature trails
- Admiral's Point (Hay Lake Marina)

When asked to rate the overall job being done of providing recreational programs and facilities in the community, more than 50% of respondents said "pretty good" while 10% said "excellent." Open ended comments related to this included:

- Better park maintenance is needed
- Boating programs could be better publicized
- Invest in improvements to the parks that exist, including accommodations for people with disabilities

Participants were asked about specific types of recreational activities and whether they currently participated in such activities, had a future interest in participating, or had no future interest in participating. The activities with the highest percentage of **current participation** included:

- Walking or hiking (83% current participation)
- Boating (79%)
- Fishing (59%)
- Picnicking (56%)
- Bicycling (50%)

The activities with the highest percentage of **future interest in participation** included:

- Ice skating (62% future interest)
- Cross country skiing (44%)
- Disk golf (41%)
- Bicycling (32%)
- Tennis (30%)
- Volleyball (30%)

The activities with the highest percentage of **no future interest in participation** included:

- In-line hockey (78%)
- Field hockey (78%)
- Ice hockey (74%)
- Skateboarding (74%)
- Football (70%)

Participants were asked about specific types of recreational facilities and whether more of such facilities should be developed. The following types of facilities received the highest percentage of votes for "many more should be developed" or "more should be developed."

- Nature areas (85% voted "many more" or "more")
- Sledding and toboggan runs (82%)
- Indoor swimming pools (82%)
- Hiking/walking trails (81%)
- Outdoor amphitheaters (68%)
- Bicycle paths (63%)
- Ice skating facilities (61%)
- Park pavilions (61%)
- Outdoor swimming pools (54%)
- Mountain biking trails (54%)

## Public Hearing

A draft plan was made available for public review and comment for a minimum period of 30 days. Upon completion of this review period, the plan was then presented at a public hearing on February 22, 2018. No further input was received at this public hearing. Following the public hearing, the plan was adopted by both the Village of Alanson and Littlefield Township on February 22, 2018.





# 7

## BASIS FOR ACTION/ GOALS AND OBJECTIVES

Many elements must be considered prior to the decision-making process of establishing goals, guidelines and a prioritized capital improvements schedule for the next five years. A community must not base recreation improvement and service decisions solely on the voice of a handful of residents or the needs and wants of community officials, but must also be aware of recreational trends, national standards, community opinion, as well as demographic trends and the capability of the land and its surroundings.

This chapter attempts to consolidate the various factors that must be acknowledged and the abundance of aspects, perceptions, and ideas that need to be filtered and categorized with the end result of producing the prioritized needs of the community. Because there are so many factors that will ultimately determine needs, caution should be taken to not analyze each piece of information individually, but integrate them all to produce the “big picture.”

### Recreation Trends

Recreation trends occurring nationally may provide insight into activities that can be expected to draw a large number of participants and activities that have shown the greatest growth in popularity. The National Sporting Goods Association (NSGA) conducts national surveys that measure activities by participation and percent change from the previous survey. The definition of participation includes those persons seven years and older who have participated in the activity more than once during the year of the survey.

Figure 7-1 lists the top sports by total participation in 2011 and 2001, percentage change from 2001 to 2011, and rank by percentage change.

In 2011, the top five sports in which people participated were:

- Exercise Walking (97.1 million)
- Exercising with Equipment (55.5 million)
- Swimming (46.0 million)
- Camping (42.8 million)
- Aerobic Exercising (42.0 million)

In terms of change over the past ten years, the top five fastest growing sports were:

- Kayaking (102.8%)
- Target Shooting (82.6%)
- Aerobic Exercising (73.0%)
- Running/Jogging (57.6%)
- Hiking (49.9%)

In terms of change over the past five years, the top five declining sports were:

- In-line Roller Skating (-68.4%)
- Dart Throwing (-44.8%)
- Billiards/Pool (-39.0%)
- Skateboarding (-31.4%)
- Fishing, Freshwater (-28.3%)

Figure 7-1

Sport	Participation in Millions		Percent Change	Rank by Change
	2011	2001		
Exercise Walking	97.1	71.2	36%	7T
Exercising w/Equipment	55.5	43.0	29%	10
Swimming	46.0	54.8	-16%	26T
Camping (Vacation/Overnight)	42.8	45.5	-6%	19
Aerobic Exercising	42.0	24.3	73%	3
Bicycle Riding	39.1	39.0	0%	16T
Hiking	39.1	26.1	50%	5
Running/Jogging	38.7	24.5	58%	4
Bowling	34.9	40.3	-13%	23
Workout at Club	34.5	26.5	30%	9
Weightlifting	29.1	21.2	37%	6
Fishing (Freshwater)	28.0	39.1	-28%	32
Basketball	26.1	28.1	-7%	20
Golf	20.9	26.6	-21%	29T
Billiards/Pool	20.0	32.7	-39%	34
Target Shooting	19.6	15.9	23%	11
Boating (Motor/Power)	16.7	22.6	-26%	31
Hunting w/Firearms	16.4	19.2	-15%	25
Soccer	13.9	13.9	0%	16T
Tennis	13.1	10.9	20%	12
Baseball	12.3	14.9	-17%	27
Backpacking	11.6	14.5	-20%	28
Softball	10.4	13.2	-21%	29T
Volleyball	10.1	12.0	-16%	26T
Fishing (Saltwater)	9.7	11.3	-14%	24
Dart Throwing	9.3	16.9	-45%	35
Football (Tackle)	9.0	8.6	5%	14
Kayaking	7.1	3.5	103%	1
Skiing (Alpine)	6.9	7.7	-10%	22
Skateboarding	6.6	9.6	-31%	33
Archery (Target)	6.3	4.7	34%	8
Inline Roller Skating	6.1	19.2	-68%	36
Mountain Biking (Off Road)	6.0	6.3	-5%	18T
Paintball Games	5.3	5.6	-5%	18T
Target Shooting (Airgun)	5.3	2.9	83%	2
Snowboarding	5.1	5.3	-4%	17
Hunting w/Bow & Arrow	5.1	4.7	9%	13
Water Skiing	4.3	5.5	-22%	30
Wrestling	3.2	3.5	-9%	21
Muzzleloading	3.1	3.0	3%	15
Hockey (Ice)	3.0	2.2	36%	7T
Skiing (Cross Country)	2.3	2.3	0%	16T

Source: National Sporting Goods Association, August 2012

## National Planning Standards

In the process of determining and prioritizing needs, it is not only important to understand the national trends in terms of participation levels and popularity, but it is also imperative to compare the provision of local recreation facilities to published standards. This comparison of existing facilities to standard acreage and facility recommendations is another tool to assist in determining needs within Littlefield Township and the Village of Alanson. However, it should be noted that the latest available national standards were developed in the 1970's and 1980's and may not fully reflect today's needs and trends.

## Acreage Standards

The National Recreation and Park Association provides a recommended park classification system which recognizes that open space has various functions. The system categorizes open space as either mini-parks, neighborhood parks or community parks. The desirable characteristics relative to size, function, amenities and acreage provisions per 1,000 people (where available) are identified in Figure 7-2.

According to the population standards for the three types of parklands, Littlefield Township and the Village of Alanson, with a total population of 2,992 persons (2011-2015 ACS), should provide the following amount of parkland:

- Between 0.75 and 1.50 acres of mini-parkland;
- Between 2.99 and 5.98 acres of neighborhood parkland;
- Between 14.96 and 23.94 acres of community parkland.

Currently, the following parks are found within Littlefield Township and the Village of Alanson:

<b><u>Mini-Parks</u></b>	<b><u>Acres</u></b>
Morgan Park	0.48
Walter Dow Roadside Park	0.29
Hillside Garden	1.32
Oden Gazebo Park	0.89
Woodruff Roadside Park	<u>0.76</u>
Sub-Total	3.74

<b><u>Neighborhood Parks</u></b>	<b><u>Acres</u></b>
Island Sanctuary Park	1.44
Alanson Village Park	1.45
School Ball Fields and Track	20.57
Oden Community Assoc. Park	<u>5.71</u>
Sub-Total	29.17

<b><u>Community Parks</u></b>	<b><u>Acres</u></b>
Hay Lake Marina/Park	14.75
Camp Petosega (Emmet Co.) (Littlefield Twp. Portion)	<u>150</u>
Sub-Total	164.75
<b>Total</b>	<b>197.66</b>

As noted above, the Township and Village presently contain 3.74 acres of mini-parkland, 29.17 acres of neighborhood parkland, and 164.75 acres of community parkland. In total, the Township and Village combined contain 197.66 acres of total parkland. Based on the park acreage per population standards, the Township and Village have a surplus of land in all park categories.

However, the above analysis includes parks not owned by the Township and Village. If the parks owned and operated by the Alanson-Littlefield Schools (Ball Fields), Alanson Beautification Center (Hillside Garden), Oden Community Association (Oden Community Association Park), and Emmet County (Camp Petosega) are

**Figure 7-2**

<b>Mini-Parks</b>	
General Description	Used to address limited, isolated, or unique recreational needs.
Location Criteria	Less than a ¼ mile distance in residential setting.
Size Criteria	Between 2,500 sq.ft. and 1 acre.
Acres per 1,000 Population	0.25 to 0.5
<b>Neighborhood Parks</b>	
General Description	Remains the basic unit of the park system and serves as the recreational and social focus of the neighborhood. Focus is on informal active and passive recreation
Location Criteria	¼ to ½ mile distance and uninterrupted by non-residential roads & physical barriers.
Size Criteria	5 acres is considered minimum size. 5 to 10 acres is optimal size
Acres per 1,000 Population	1.0 to 2.0
<b>Community Parks</b>	
General Description	Serves broader purpose than neighborhood park. Focus is on meeting community-based recreation needs, as well as preserving unique landscapes and open spaces.
Location Criteria	Determined by the quality and suitability of the site. Usually serves two or more neighborhoods and ½ to 3 mile distance
Size Criteria	As needed to accommodate desired uses. Between 30 and 50 acres.
Acres per 1,000 Population	5.0 to 8.0

Source: National Recreation and Park Association

excluded from the acreage calculations, the Township and Village would be left with only 2.42 acres of mini-park land, 2.89 acres of neighborhood parkland, and 14.75 acres of community parkland.

#### **Park Service Areas**

As shown in Figure 7-2, each park type is given a typical service area. For community parks, the NRPA estimates a 0.5 to 3-mile service area (the maximum of this range, 3 miles, will be used for the purposes of this report). For neighborhood parks, the NRPA estimates a 0.25 to 0.5-mile service area (the maximum of this range, 0.5 miles, will be used for the purposes of this report). For mini-parks, the NRPA estimates a 0.25-mile service area.

The extent of the service areas within Littlefield Township and the Village of Alanson, based on existing parks and their park classification, is shown on Figure 7-3. This map effectively shows the locations within the Township and Village that are out of range of a certain type of park facility.

The entire Village is currently within the 3-mile radius of the community park Hay Lake Marina/Park. Most of Littlefield Township is also serviced by either Hay Lake Marina/Park or Camp Petosega community parks, except for the western-most section of the Township.

All lands within the Village are within the recommended range (0.5 miles) of a neighborhood park. (Because community parks also serve as neighborhood parks for the residents in the immediate

Village of Alanson/Littlefield Township  
Recreation Plan 2018-2022





vicinity, they are included in the neighborhood park radius analysis.) However, limited areas of the Township are within the recommended range of a neighborhood park. Township lands within the recommended range of a neighborhood park are found in the vicinity of Oden, just outside of the Village, and in the southeastern corner of the Township.

The majority of the lands within the Village are within the recommended range (0.25 miles) of a mini-park. (Because community parks and neighborhood parks also serve as mini-parks for the residents in the immediate vicinity, they are included in the mini-park radius analysis.) Township lands within the recommended range of a mini park are found in the vicinity of Oden, bordering the northwestern corner of the Village, the area adjacent to Hay Lake Marina/Park and in the southeastern corner of the Township.

#### **Sports Facility Standards**

The NRPA has also published typical recreation facility standards that specify facility service areas, the number of facilities needed to service the population as well as the land area needed. Standards for active sports facilities usually located within neighborhood and community parks are provided in Figure 7-4. These standards can be used in conjunction with the acreage standards to further identify the Township and Village's recreation needs.

The following narrative provides a comparison of the Township and Village's park facilities against published sports facility standards based on the 2015 population of the Township and Village (2,992 residents). Based on the standards, the following types and number of sports facilities should be present in the Township and Village:

<b><u>Facility Type and Population Standard</u></b>	<b><u># of Facilities Needed Based on Standard</u></b>
Basketball Court (1 per 5,000)	1
Ice Hockey (1 per 100,000)	None
Tennis Court (1 per 2,000)	1
Volleyball Court (1 per 5,000)	1
Baseball/Softball Fields (1 per 5,000)	1
Football Field (1 per 20,000)	None
Soccer Field (1 per 10,000)	None
Swimming Pool (1 per 20,000)	None
Trails (1 per region)	1

**Figure 7-4 Active Sports Facility Standards**

Activity/Facility	Minimum Space Requirements	Units per Population	Service Radius	Location Notes
Basketball Court (Outdoor)	2,400 - 3,036 sq. ft. (youth); 5,040 - 7,280 sq. ft. (high school)	1 per 5,000	1/4 to 1/2 mile	Outdoor courts in neighborhoods and community parks, plus active recreation areas in other park settings.
Ice Hockey	22,000 sq. ft.	1 per 100,000	1/2 hour to 1 hour travel time	Climate important consideration including travel time affecting number of units
Tennis Court	7,200 sq. ft./court; 2 ac./complex	1 per 2,000	1/4 mile to 1/2 mile	Best in batteries of 2-4, located in neighborhood community park or adjacent to school site.
Volleyball Court (Outdoor)	4,000 sq. ft.	1 per 5,000	1/4 to 1/2 mile	Outdoor courts in neighborhoods and community parks, plus active recreation areas in other park settings.
Ballfields Baseball Little League Softball	3 to 3.85 acres 1.2 acres 1.5 to 2 acres	1 per 5,000; 1 lighted field per 30,000	1/4 to 1/2 mile	Part of neighborhood complex; lighted fields part of community complex; softball fields may also be used for youth baseball.
Football Field	1.5 acres	1 per 20,000	15 to 30 minutes travel time	Usually part of baseball, football, soccer complex in community park or adjacent to high school.
Soccer Field	1.7 to 2.1 acres	1 per 10,000	1 to 2 miles	Number of units depends on popularity; youth soccer on smaller fields adjacent to schools or neighborhood parks.
Swimming Pool	1.5 to 2 acres	1 per 20,000	15 to 30 minutes travel time	Located in community park or school site.

Source: Data from Roger A. Lancaster, Ed., *Recreation, Park and Open Space Standards and Guidelines*, Alexandria, Virginia: National Recreation and Park Association, 1983, pages 60-61.

Currently, the following active sports facilities are found within the Village and Township:

<u>Existing Facility Type</u>	<u>Number</u>	<u>Location (s)</u>
Basketball Courts	3	Two at Alanson Village Park and one at Oden Community Park
Ice Hockey	None	
Tennis Courts	2	One at Alanson Village Park and one at Camp Petosega
Volleyball Courts	None	
Baseball/Softball Fields	3	Two at the Alanson-Littlefield School Site and one at Oden Community Park
Football Fields	None	
Soccer Fields	None	
Swimming	2	Outdoor beach at Walter Dow Roadside Park and outdoor beach at Camp Petosega
Trail	1	North West State Trail

Based on the comparison of the sports facility standard against existing sports facilities, only one deficiency exists in the Township and Village. This deficiency is in volleyball courts (1 needed versus 0 provided). The Township and Village currently have a surplus in basketball courts (1 needed versus 3 provided), tennis courts (1 needed versus 2 provided), baseball/softball fields (1 needed versus 3 provided), and swimming (0 needed versus 2 provided).

This data can be used in conjunction with other factors contained within this plan such as results of the public workshop. It should also be noted that these standards are somewhat dated and may not accurately reflect the popularity or decline in popularity of recreation activity.

## Related Planning Initiatives

Regional planning initiatives are significant in terms of their relevance to the provision of recreation within the Village and Township. Initiatives that could impact recreation in the Village or Township are described in further detail below.

### Emmet County Recreation Plan

The Emmet County Recreation Plan was prepared and adopted in 2013. Considerable public input supported the development of the Plan, including the hosting of three community forums. The plan also drew upon the results of the 2009 Emmet County Parks and Recreation Survey. According to the Plan, attendees at the community forums “overwhelmingly expressed the need for improvements to existing trails, such as trailhead parking areas and the need for more trails.”

The following eight recreation goals were established in the County Recreation Plan:

1. Continue to improve parks, meet recreation facility needs, and provide diverse recreational opportunities for all age and ability groups.

2. Preserve, maintain, and enhance public lands for recreation.
3. Ensure pace of growth of parks and access to natural areas meets or exceeds the needs of Emmet County.
4. Protect, maintain and enhance the quality of natural resources within the County.
5. Create a healthy community by providing spaces for outdoor activities.
6. Protect and preserve historic property resources.
7. Expand a variety of recreational trails for enjoyment and alternate transportation.
8. Provide access to information identifying available recreational opportunities.
9. Support acquisition of land for passive and active recreation.
10. Continue to strive to provide ADA accessibility to all facilities.
11. Expand programs and interpretive activities to more parks.
12. Develop partnerships linking agencies and organizations promoting programming across multiple jurisdictions.
13. Support and promote development of dark sky coast.
14. Recognize economic benefits of recreation.

The County Recreation Plan also featured an implementation plan for future recreation improvements within the County. The following strategies included in the County’s implementation plan are specific to the Village of Alanson and/or Littlefield Township:

- Develop bike trail from Alanson to Camp Petosega
- Develop 10K trail at Camp Petosega
- Install trailhead parking off Crump Road for snowmobile trail
- Develop a horse trail separate but parallel to the Northwestern State Trail within the railroad right of way

## Goals and Objectives

Goals and objectives statements were developed along with the Recreation Advisory Committee to give purpose and direction to the enhancement, development and sustainment of parks and recreational resources within the Village and the Township. These goals and objectives were formulated based upon input received at the Public Input meeting, from numerous meetings with the Recreation Advisory Committee, from an understanding of existing natural resources, an analysis of accessibility, and national and regional trends.

As used herein, a goal is the purpose toward which an endeavor is directed. It is the most general level of recommendations and sets the broad framework for more specific objectives. An objective is a specific and often incremental action taken toward achieving a certain goal. Objectives are more specific than goals and are susceptible to modification due to changing economic, organizational and political forces in the community.

The following goals and objectives reflect the community's parks and recreation interests and intentions. The order of listing does not impart any indication of importance or priority.

### 1. Partnerships

#### GOAL:

Coordinate with other recreation providers and entities in order to provide the community with diverse program and facility opportunities that are cost effective and efficient.

#### OBJECTIVES:

1) Collaborate with nearby communities and entities in order to leverage resources, avoid duplication of services, and provide a wide-range of programs and facilities. This includes collaboration with:

- a) Emmet County
- b) City of Petoskey
- c) Village of Pellston
- d) City of Harbor Springs
- e) Pleasantview Township
- f) Maple River Township
- g) Burt Township
- h) Tuscarora Township
- i) Springvale Township
- j) Bear Creek Township
- k) Little Traverse Township
- l) Michigan Department of Natural Resources
- m) Michigan Department of Environmental Quality
- n) Michigan Department of Licensing and Regulatory Affairs
- o) Michigan State University Extension Service
- p) USDA Natural Resources Conservation Service
- q) U.S. Army Corps of Engineers

2) Maintain high levels of communication and cooperation with the various service clubs, associations, and athletic organizations including:

- a) Inland Water Route Historical Society
- b) Oden Community Association
- c) Harbor Springs Snowmobile Club
- d) Alanson Beautification Center
- e) Alanson Improvement Group
- f) Alanson Women's Club
- g) North Emmet County Little League Association
- h) Alanson Area Public Schools
- i) Little Traverse Conservancy

3) Seek and develop partnerships with corporations, businesses, and the retail community in order to implement improvements, sponsor events, and/or provide facilities.

## **2. Facility Development, Improvement and Expansion**

### **GOAL:**

Continue to improve parks, expand trail systems, meet recreation facility needs, and provide diverse recreation opportunities for all age and ability groups. Where appropriate, seek opportunities to acquire additional park sites in support of overall recreation goals and objectives.

### **OBJECTIVES:**

- 1) Develop a boathouse and auxiliary facilities for the Inland Water Route Historical Society's "River Trip" project.
- 2) Morgan Park
  - a) Upgrade boat docks.
  - b) Upgrade drinking fountain.
  - c) Develop facilities to accommodate small gatherings including a pavilion, bench swings, a fire circle, and picnic tables.
  - d) Upgrade landscaping.
- 3) Develop boat dock and boardwalk edge along a portion of the Bass Street property along the Crooked River.
- 4) Explore and develop means to control parking at Walter Dow Roadside Park.
- 5) Explore potential scopes of development at the property associated with the Littlefield Township Fire Department.
  - a) Develop site as a passive park
  - b) Develop loop trails and connection to regional trail
  - c) Prepare conceptual study exploring opportunities for group gatherings, fitness and health-oriented facilities, and play equipment for both children and adults
- 6) Determine feasibility of constructing second gymnasium at the school.
- 7) School Ball Field Site
  - a) Upgrade fencing, field turf, infield surfacing and spectator facilities.
  - b) Study feasibility of utilizing site to accommodate additional facilities for community-wide use including a skate park, an ice skating rink, additional sports or recreation fields, facilities for large group gatherings, and walking/fitness trails.
- 8) Study feasibility to develop the Township-owned landfill site on Moore Road as a community park and trail head, particularly for snowmobiling.
- 9) Study feasibility of developing an ice skating rink (see #7b above) including the possibility of using synthetic ice.
- 10) Study feasibility of developing a dog park for use by residents and tourists.
- 11) Seek opportunities to acquire land for recreational purposes.
  - a) Protects environmental features
  - b) Provides public waterfront access
  - c) Conserves open space
  - d) Is adjacent to or near existing parks
  - e) Provides linkages between destinations
  - f) Could provide increased and enhanced recreation opportunities
  - g) Provides locations for parks in currently underserved areas
- 12) Develop and implement consistent signage within parks and along access roads to raise the level of awareness of park locations and facilities.



### **3. Tourism**

#### **GOAL:**

Offer the same recreational opportunities to residents and tourists alike, whether they arrive by road or by water.

#### **OBJECTIVES:**

- 1) Educate the community about the benefits of historic preservation to the community's quality of life, economic development and tourism.
- 2) Create community awareness of county-wide and regional recreation opportunities.
- 3) Educate the public on the value of the natural world.
- 4) Promote the Village and the Township, along with Emmet County, as eco-tourism destinations.

### **4. Accessibility, Connectivity and Recreational Trails**

#### **GOAL:**

Ensure that parks and recreation facilities are accessible, provide non-motorized links to promote a walkable, connected community, and provide trails, links and trailhead facilities suitable for snowmobiling.

#### **OBJECTIVES:**

- 1) Ensure barrier free accessibility to all parks and recreation facilities within the community.
  - a) Identify and encourage the use of Universal Design Standards for new and upgraded facilities.
- 2) Expand and improve connectivity within downtown area and between downtown and the riverfront, parks and schools.
  - a) Support the development of a walkable community and Safe Routes To Schools criteria.

3) Develop non-motorized connections to and between all parks.

4) Work with Emmet County to develop non-motorized trail between Alanson and Camp Petosega.

5) Develop loop trails with the Village as a central hub for day hiking and recreational biking.

6) Work with surrounding jurisdictions to improve water routes along the Crooked River and within Crooked and Pickerel Lakes.

- a) Seek acquisition opportunities for boat launch sites.

7) Preserve, protect and support acquisition of shorelines and streams for public access.

8) Develop bridge connection over Highway 31 at Milton Road to Ponshewaing.

9) Promote development of trailheads and trail routes for snowmobiling.

### **5. Natural Resources**

#### **GOAL:**

Preserve and protect the natural resources and environmentally sensitive lands within the community while maintaining public use, access, and enjoyment.

#### **OBJECTIVES:**

- 1) Strive to protect and restore water quality, stream channels, riparian corridors, natural areas, wetlands, and unique ecosystems.
- 2) Increase awareness and education of local natural resources through interpretive signage.
- 3) Implement streambank restoration and erosion control measures utilizing soft shoreline techniques.

4) Work with public and private entities to conserve contiguous stretches of wild lands for the benefit of wildlife, water quality, and ecosystem integrity.

5) Where possible, utilize low-impact development (LID) techniques to manage storm water that infiltrate, filter, store, evaporate, and detain runoff close to its source.

6) Restore and enhance in-stream habitat.

2) Seek to offer and maintain programs, events and facilities that will generate revenue for the community to invest back into parks and recreation.

3) Obtain assistance from alternative funding sources such as grants from private and public entities, individual and corporate donations, sponsorships, and fund-raising events.

## **6. Maintenance and Operation**

### **GOAL:**

Strive to ensure effective and efficient operation and maintenance of public parks and facilities within the Village and the Township.

### **OBJECTIVES:**

1) Seek assistance from dedicated service clubs, organizations, volunteers, and associations to assist in maintaining and improving facilities.

2) Consider utilizing seasonal interns from college or university-based landscape management programs.

## **7. Funding**

### **GOAL:**

Seek alternative funding sources and partnerships to assist in implementing the goals, guidelines, and capital improvement projects in the 5-year Recreation Master Plan.

### **OBJECTIVES:**

1) Develop a database of all of the community based service organizations and foundations. Research missions, funding targets, etc. Make contacts and learn how potential applications for funding are best prepared.



# 8

## ACTION PLAN

### Capital Improvements Schedule

Potential capital improvements for this Recreation Plan have been established not only to provide a guide and foundation for decision makers, but also to enable the Village and the Township to apply for grant funding for proposed projects. The capital improvements schedule is not a fixed element and is neither all inclusive nor exclusive. The schedule reflects the results of Village and Township input, discussions with staff, and input from the parks and recreation survey and public hearing.

It is very likely that the schedule and plan will be amended at some point during its life due to unanticipated circumstances such as private donations, changing recreation trends, community opinion, and/or available funding. The schedule should be considered in close conjunction with the goals and guidelines of the plan. The following capital improvements schedule provides an outline and guide. It is difficult to predict desires, funding availability, etc. in the years to come. However, it is important to note that recreation capital projects undertaken by the Village and the Township should address the goals and guidelines previously set forth in this plan.

	<u>Location</u>	<u>Project</u>	<u>Rationale</u>	<u>Year</u>	<u>Estimated Cost</u>	<u>Potential Funding Sources</u>
1	Riverfront in Alanson	Boathouse / River Trips	Continue to facilitate tourism, education opportunities	Ongoing	\$50,000	Historical Society, MDNR, Private Donations
2	Morgan Park	Upgrade Boat Docking	Existing docks deteriorating; improved access	2019	\$150,000	MDNR
3	Morgan Park	Accessibility Upgrades	Provide access that meets current standards	2019	\$35,000	MDNR, Local Matches
4	Bass Street	Swimming area or beach area	Development of swimming or beach area at River	2022	\$75,000	MDNR, Local Matches
5	Walter Dow Park	Sidewalk/ Walkway Upgrades	Accessibility and safety upgrades	2019	\$35,000	MDNR, MDOT
6	Fire Dept. Site	Passive Park/ Trail System Development	Local and regional trail connections, fitness and health-oriented facilities	2022	\$50,000	MDNR, Trail Organizations
7	Not Identified	Ice Skating Park	Provides recreation for residents and tourists - assume natural ice	2022	\$50,000	MDNR, Local Matches
8	Multiple	Non-motorized Connections To/ Between Parks	Enhance connectivity and accessibility	Ongoing	\$150,000	MDNR, Local Funding
9	Hay Lake Marina	Park Development	Projects to include dredging, new seawall, relocation of existing ramp, universal canoe/kayak access, infrastructure improvements, paved parking and restrooms	2018 - 2022	\$500,000	MDNR
10	Village Park	Accessibility Improvements	Greatly enhance use by people of all capabilities	2019	\$125,000	MDNR, Local Funding

	<u>Location</u>	<u>Project</u>	<u>Rationale</u>	<u>Year</u>	<u>Estimated Cost</u>	<u>Potential Funding Sources</u>
11	Village of Alanson	Petoskey - Mackinaw City Trail Segment	Planning study to determine firm route through Village	Ongoing	\$5,000	Emmet County, MDNR, Northwest Trails Council
12	Ponshewaing	Pedestrian Crossover-Highway 31 - Feasibility Study	Accessibility and safety	2020	\$10,000	MDOT, Local Funding
13	Oden Gazebo Park	Park Improvements	Gazebo restoration, sidewalk/walkway improvements, playground and restrooms	2018	\$20,000	Local Funding
14	Woodruff Park (Roadside Park)	Armed Forces Memorial and General Site Upgrades	Accessibility and expanded functions; well improvements	2018	\$15,000	MDOT, Local Funding

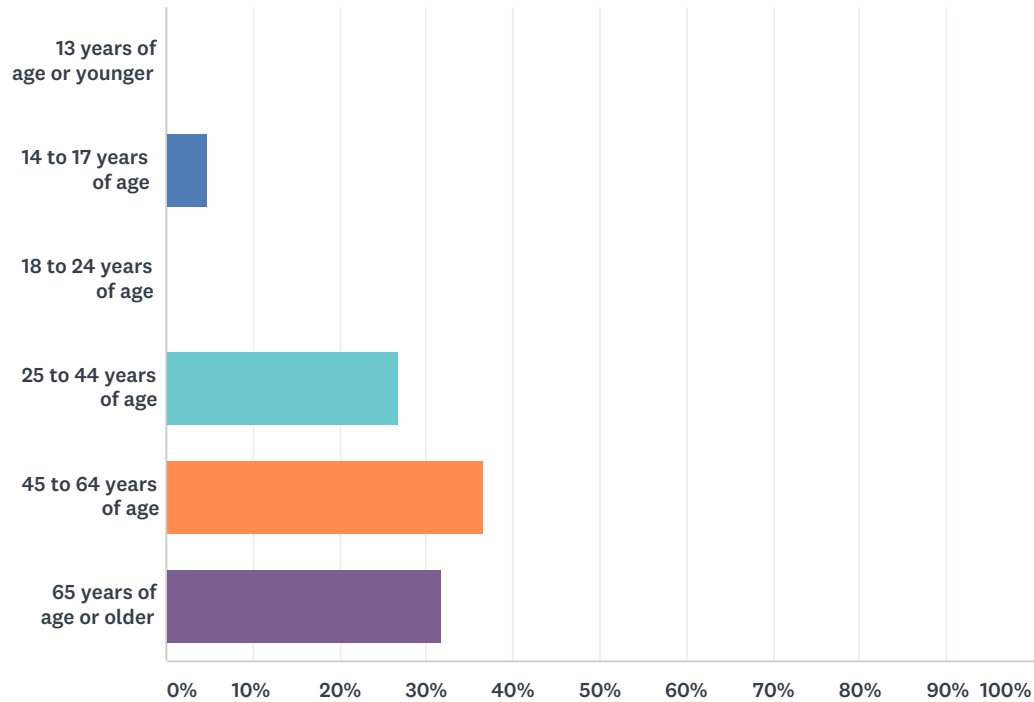


This page is intentionally left blank.

## APPENDIX A

Q1 Please indicate your age range.

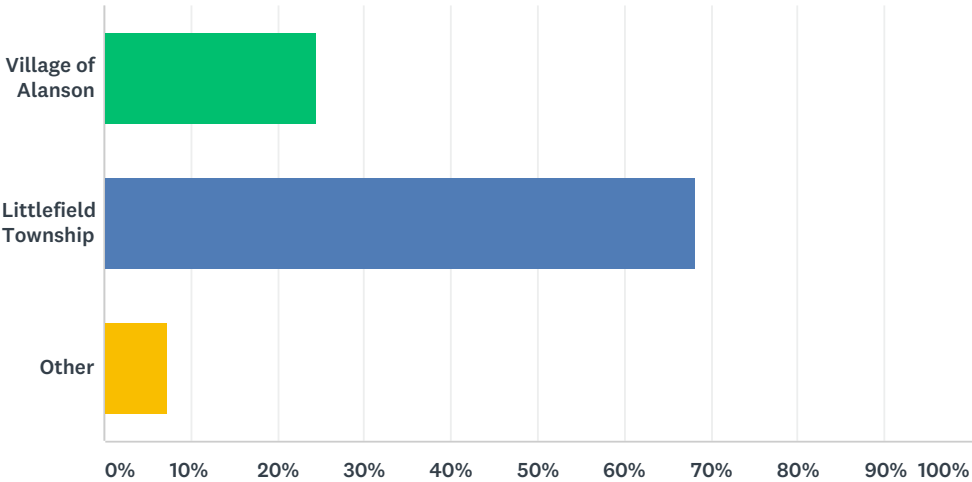
Answered: 41    Skipped: 0



ANSWER CHOICES	RESPONSES	
13 years of age or younger	0.00%	0
14 to 17 years of age	4.88%	2
18 to 24 years of age	0.00%	0
25 to 44 years of age	26.83%	11
45 to 64 years of age	36.59%	15
65 years of age or older	31.71%	13
TOTAL		41

Q2 In which community do you live? (full-time or seasonal resident)

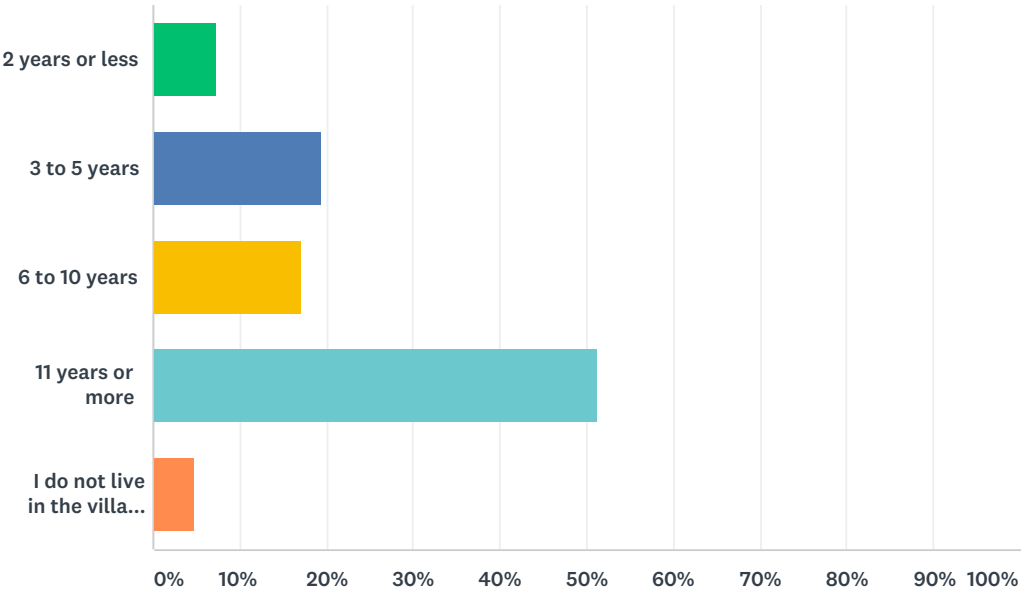
Answered: 41    Skipped: 0



ANSWER CHOICES		RESPONSES	
Village of Alanson		24.39%	10
Littlefield Township		68.29%	28
Other		7.32%	3
TOTAL			41

### Q3 How many years have you lived in the Village of Alanson/Littlefield Township community?

Answered: 41    Skipped: 0

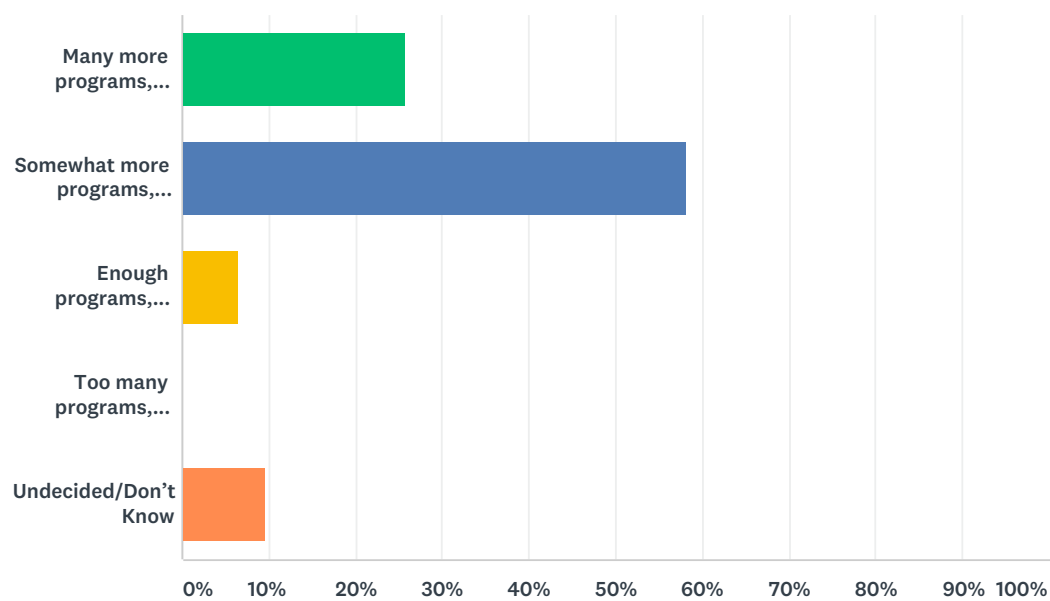


ANSWER CHOICES	RESPONSES	
2 years or less	7.32%	3
3 to 5 years	19.51%	8
6 to 10 years	17.07%	7
11 years or more	51.22%	21
I do not live in the village or township	4.88%	2
TOTAL		41



Q4 Thinking about the number of recreational programs, activities and facilities provided in the community, do you believe that overall...

Answered: 31 Skipped: 10



ANSWER CHOICES		RESPONSES	
Many more programs, activities and facilities are needed		25.81%	8
Somewhat more programs, activities and facilities are needed		58.06%	18
Enough programs, activities and facilities are available now		6.45%	2
Too many programs, activities and facilities are available now		0.00%	0
Undecided/Don't Know		9.68%	3
TOTAL			31

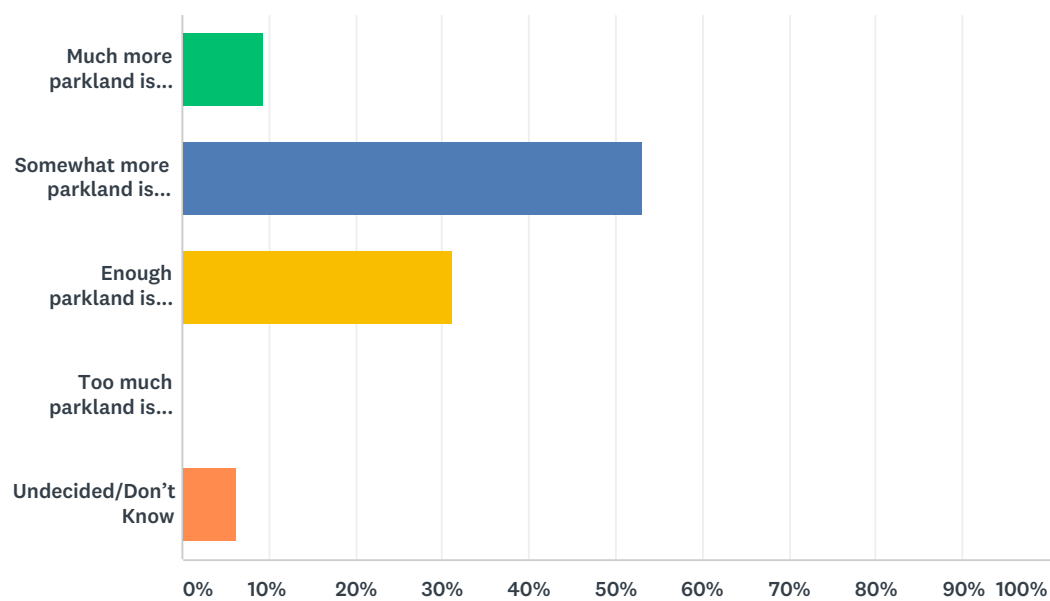
## Q5 What other programs, activities or facilities do you think should be provided that are not currently offered? (Write in up to 3 responses)

Answered: 23 Skipped: 18

#	RESPONSES	DATE
1	Trailhead for bike path	1/8/2018 2:47 PM
2	More children's activities; sidewalks/walking trails	1/8/2018 2:44 PM
3	It would really be great to have a dependable restroom near the village park from spring thaw to about Thanksgiving - or perhaps Halloween would do.	1/8/2018 2:40 PM
4	1.Better bike/pedestrian crossing in Alanson. 2. Outdoor workout area-pull up bar, parallel bars, etc. 3. Public beach on Crooked Lake 4. Winter walking trail	12/30/2017 7:20 PM
5	rec center	12/28/2017 12:44 PM
6	History programs docking facilities	12/26/2017 12:27 PM
7	Pickleball	12/12/2017 10:58 AM
8	I would like to see some cross walks on US-31 for people to safely get from the lake side to the bike path. This would benefit not only bike riders, but also snowmobilers.	12/7/2017 8:25 PM
9	We need safer access across US31 to/from the bike path which runs along Crooked Lake and US 31	12/7/2017 6:47 PM
10	Summer programs for the young people.	12/6/2017 12:02 AM
11	Somewhere for indoor activites for kids.	12/5/2017 9:02 AM
12	A craft fair in autumn	12/4/2017 5:25 AM
13	As of this writing, will need to ponder this.	11/23/2017 1:24 AM
14	Fitness classes	11/22/2017 7:34 PM
15	More kid friendly programs and activities	11/22/2017 6:45 PM
16	Young adult/adult community team sports such as softball, basketball, etc.	11/22/2017 6:02 PM
17	I feel the most important item is use of our beautiful river. Meaning we NEED a fuel pump for the boaters that pass through & many dock to walk to several restaurants for lunch etc. We do have a nice small park by the public docks & restroom facility at the bridge tender site. The old Spanky's gas & snack shop was great & so sorry to see it gone.	11/22/2017 1:24 PM
18	open gym or teen activity	11/22/2017 1:01 PM
19	Playground/structure in Oden, indoor community center type structure, community gardening area	11/22/2017 12:44 PM
20	Skiing lesson, skating park, fishing tournament	11/22/2017 12:33 PM
21	More kids activities Maybe a community picnic (like a potluck) couple times in summer More Christmas activities	11/22/2017 12:16 PM
22	Clubs(basketball, tennis) Toddler friendly playground	11/22/2017 12:10 PM
23	Community dinner / events Children's programming at the park.	11/22/2017 12:06 PM

Q6 Thinking about the number of parks in the community, do you believe that overall...

Answered: 32 Skipped: 9



ANSWER CHOICES	RESPONSES	
Much more parkland is needed	9.38%	3
Somewhat more parkland is needed	53.13%	17
Enough parkland is available now	31.25%	10
Too much parkland is available now	0.00%	0
Undecided/Don't Know	6.25%	2
TOTAL		32

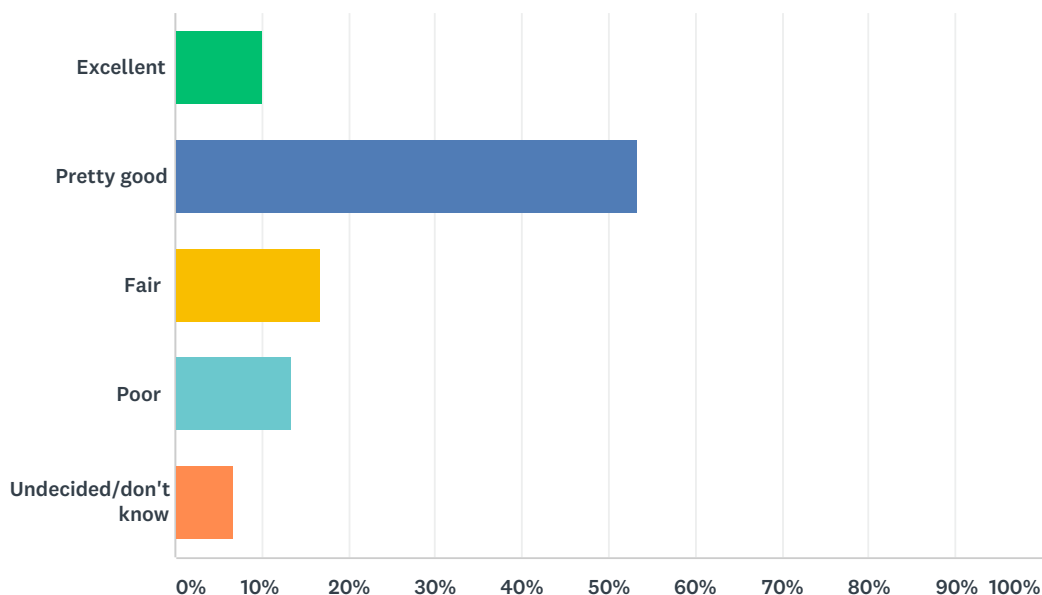
## Q7 Is there a specific location within the community where you think more parkland should be developed? (Write-in up to 3 responses)

Answered: 19 Skipped: 22

#	RESPONSES	DATE
1	Riverfront	1/8/2018 2:47 PM
2	A little farther out of town for those kids living on the other side of swing bridge	1/8/2018 2:44 PM
3	Expand the area next to the old gazebo off of US31, if possible. 2. land for winter walking trail	12/30/2017 7:20 PM
4	The "Oden Marina District" idea is a good one Upgrade downtown river park Most heavily used "park" is the sandbar on Crooked Lake	12/26/2017 12:27 PM
5	Along river outside alanson	12/12/2017 10:58 AM
6	There is a small park on the shores of US31 which could be updated. Currently, there is just a small fountain, no benches or recreational equipment and the lake is not really very accessible. A beach could be made or benches added, even a swing.	12/7/2017 6:47 PM
7	Never enough green open space!	12/6/2017 12:02 AM
8	Somewhere by water for kids fishing. Walking trails for kids to learn about the enviroment.	12/5/2017 9:02 AM
9	not at this time	12/4/2017 5:25 AM
10	As of this writing, will need to ponder this	11/23/2017 1:24 AM
11	I'd love to see community hiking trails (in the woods). Perhaps on the property behind the school? Anything on the river. Let's play up what we have.	11/22/2017 6:02 PM
12	Someplace in little field township would be nice!	11/22/2017 3:54 PM
13	Perhaps at Admirals Point there could be some type of park with restroom facility & picnic tables etc for boaters as they pass by?	11/22/2017 1:24 PM
14	?	11/22/2017 1:01 PM
15	Oden downtown	11/22/2017 12:44 PM
16	Ball Fields	11/22/2017 12:33 PM
17	Yes the baseball diamond on Moore could be a great place if it had just a bit of clean up and maybe some swings	11/22/2017 12:16 PM
18	Baseball field	11/22/2017 12:10 PM
19	N/A - but we should invest in updating our park, especially when it comes to ADA compliance	11/22/2017 12:06 PM

## Q8 Overall, how would you rate the job being done of providing recreational programs and facilities in the community?

Answered: 30 Skipped: 11



ANSWER CHOICES	RESPONSES
Excellent	10.00% 3
Pretty good	53.33% 16
Fair	16.67% 5
Poor	13.33% 4
Undecided/don't know	6.67% 2
TOTAL	30

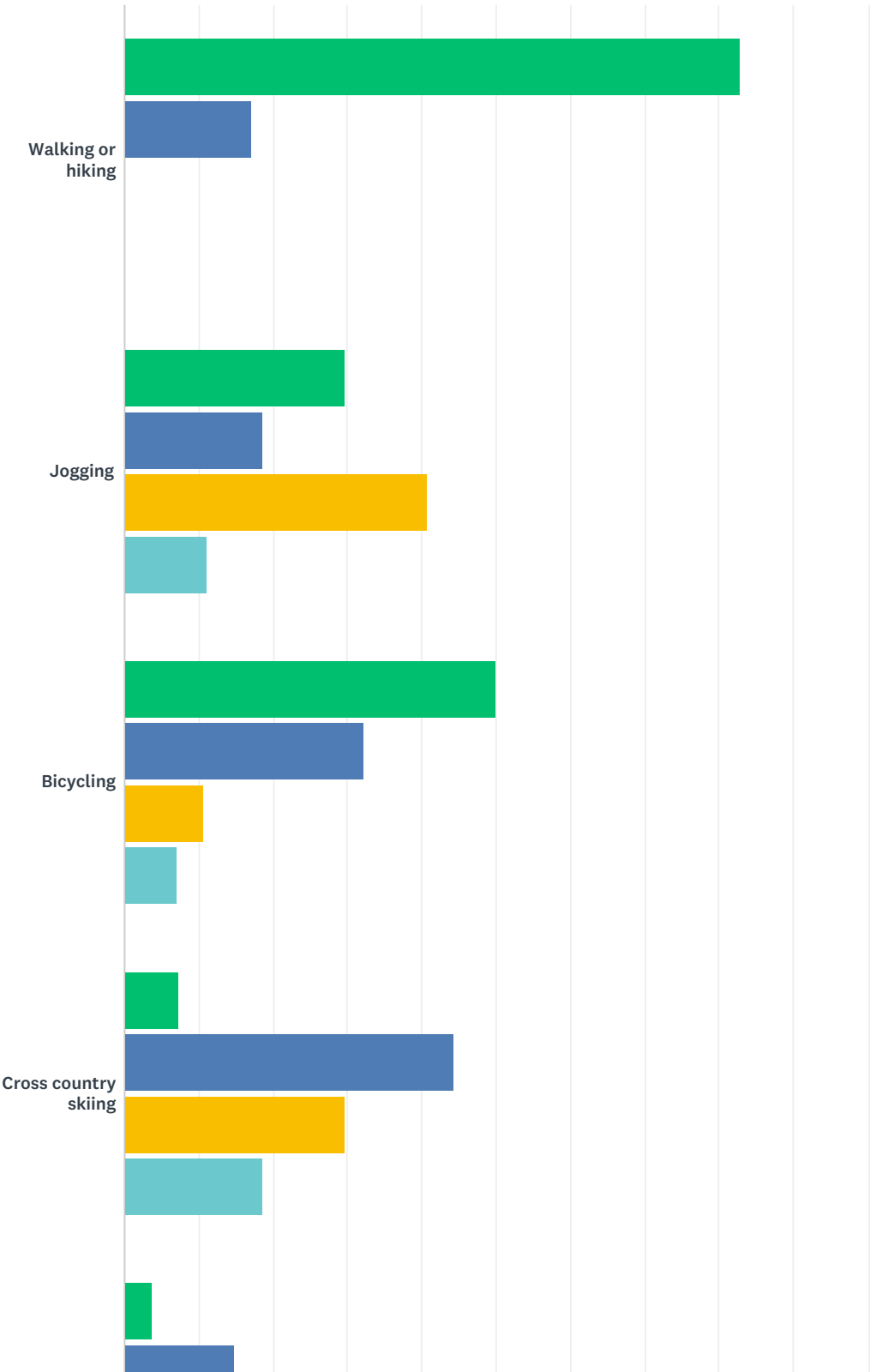
#	PLEASE FEEL FREE TO EXPAND UPON YOUR ANSWER.	DATE
1	Upkeep needs to be better. i.e., keeping public restrooms clean and keeping public restrooms open in day.	1/8/2018 2:44 PM
2	Crooked Lake Sailors sailing and boating programs could be better publicized (open to all, scholarships offered, etc.)	12/26/2017 12:27 PM
3	We have none	11/22/2017 7:34 PM
4	We are moving in the right direction, just need a master plan and further follow through.	11/22/2017 6:02 PM
5	I don't know of any programs, so if there is some you might want to let the community know!	11/22/2017 3:54 PM
6	For our small community I feel we are doing pretty good.	11/22/2017 1:24 PM
7	I know it's not easy to do much with tight budgets. I think it is getting better with the addition of the old marine.	11/22/2017 12:33 PM
8	I love all the young fresh ideas!!! Just what we need	11/22/2017 12:16 PM
9	Unaware of any programs	11/22/2017 12:10 PM

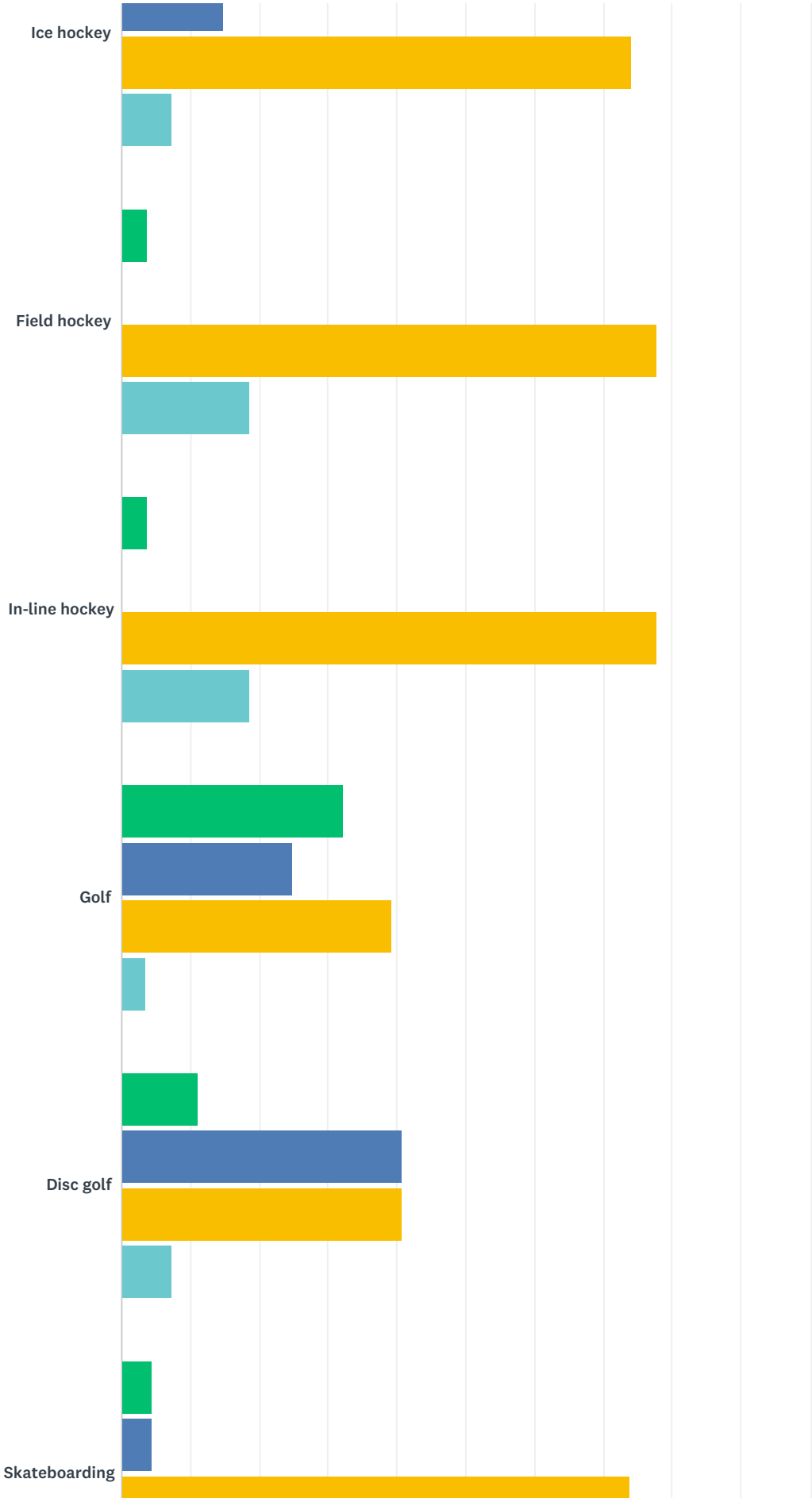
10	I would like to see more money invested in expanding the parks that exist. Specifically, accommodations need to be made for people with disabilities, and each council should spend more of their money protecting the parks, particularly from Vandals	11/22/2017 12:06 PM
----	---	---------------------

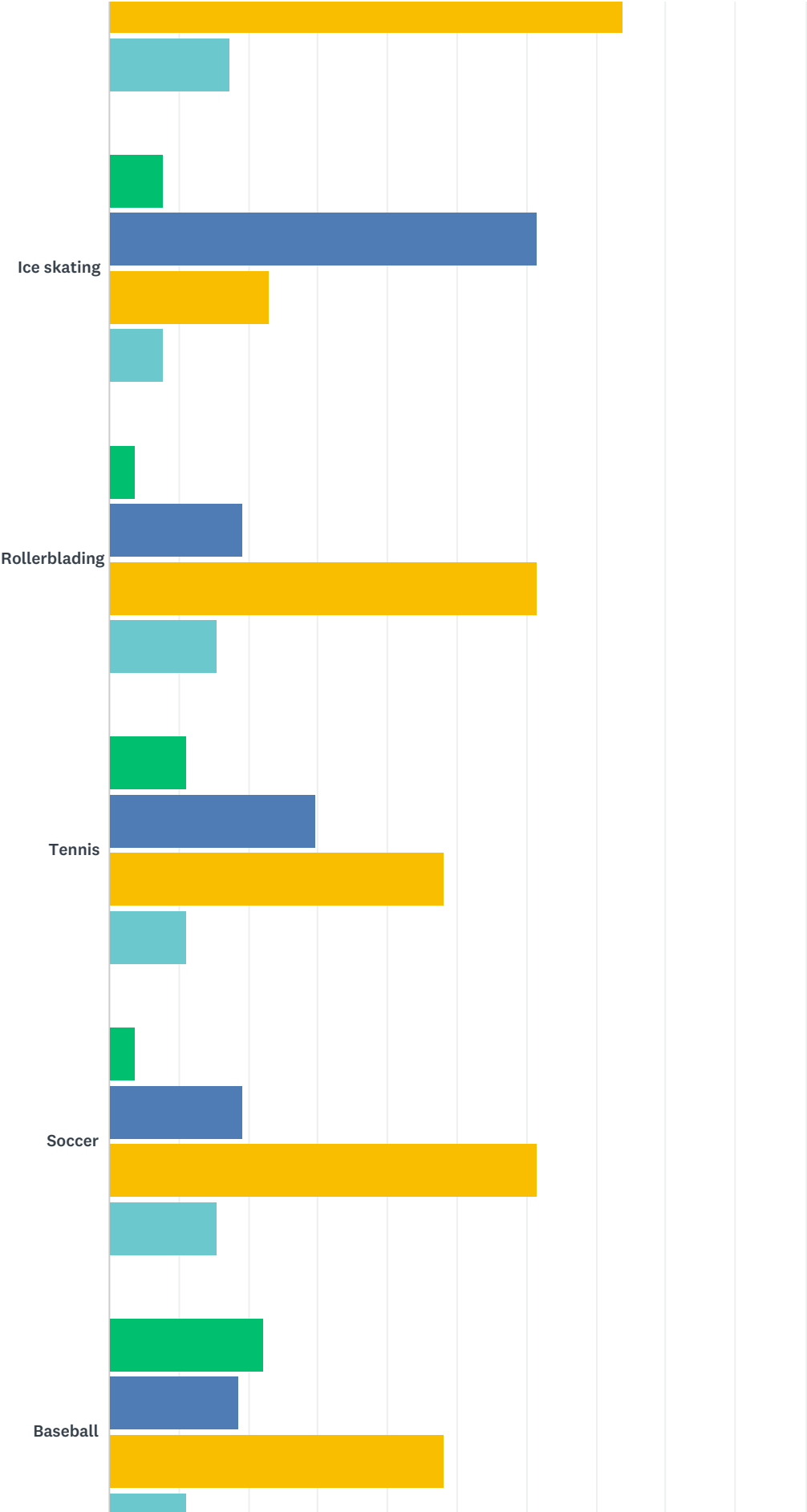


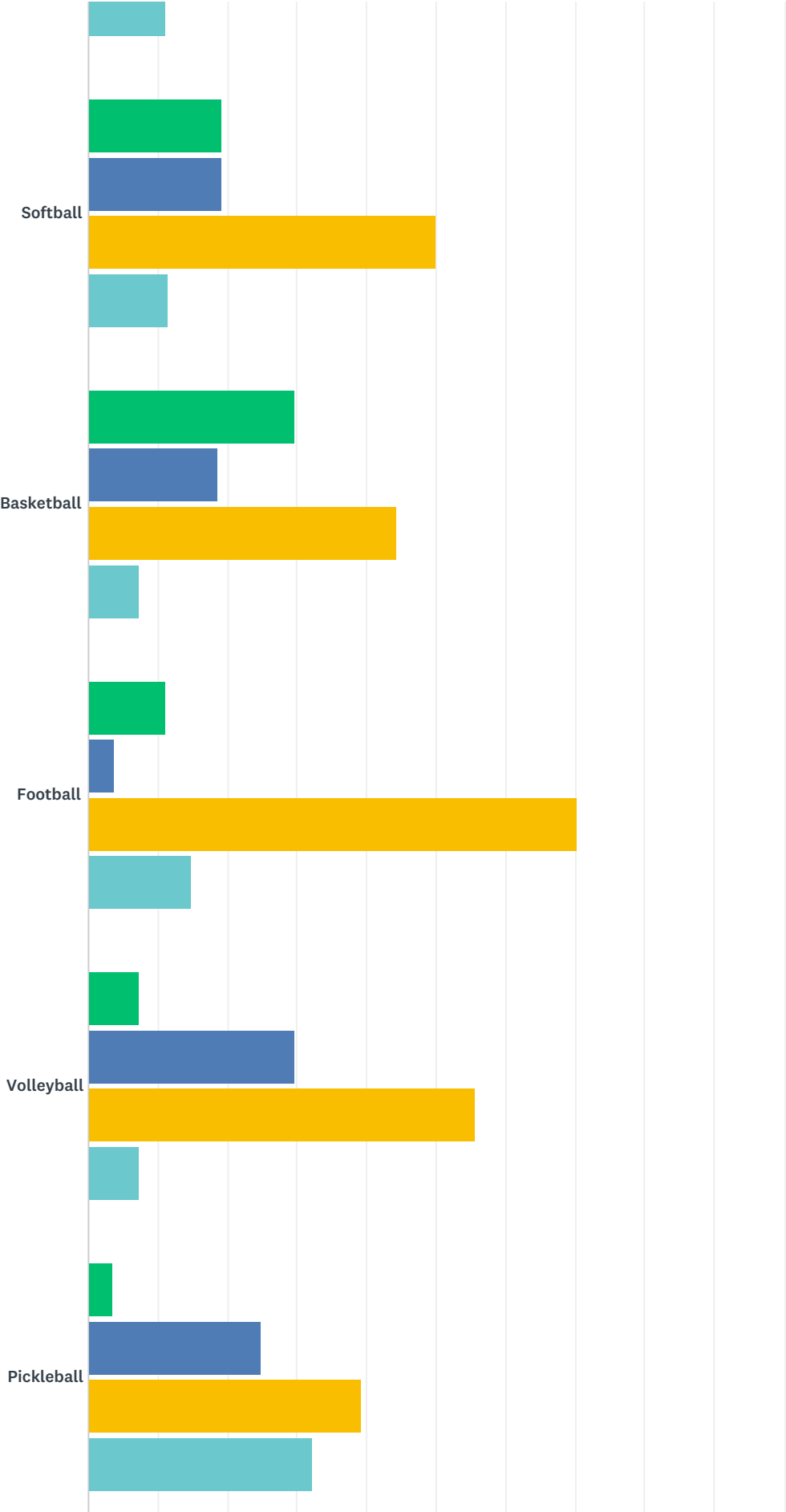
Q9 The following is a list of several specific types of physical recreational activities. Please mark the answer that most accurately describes you and/or your family’s participation.

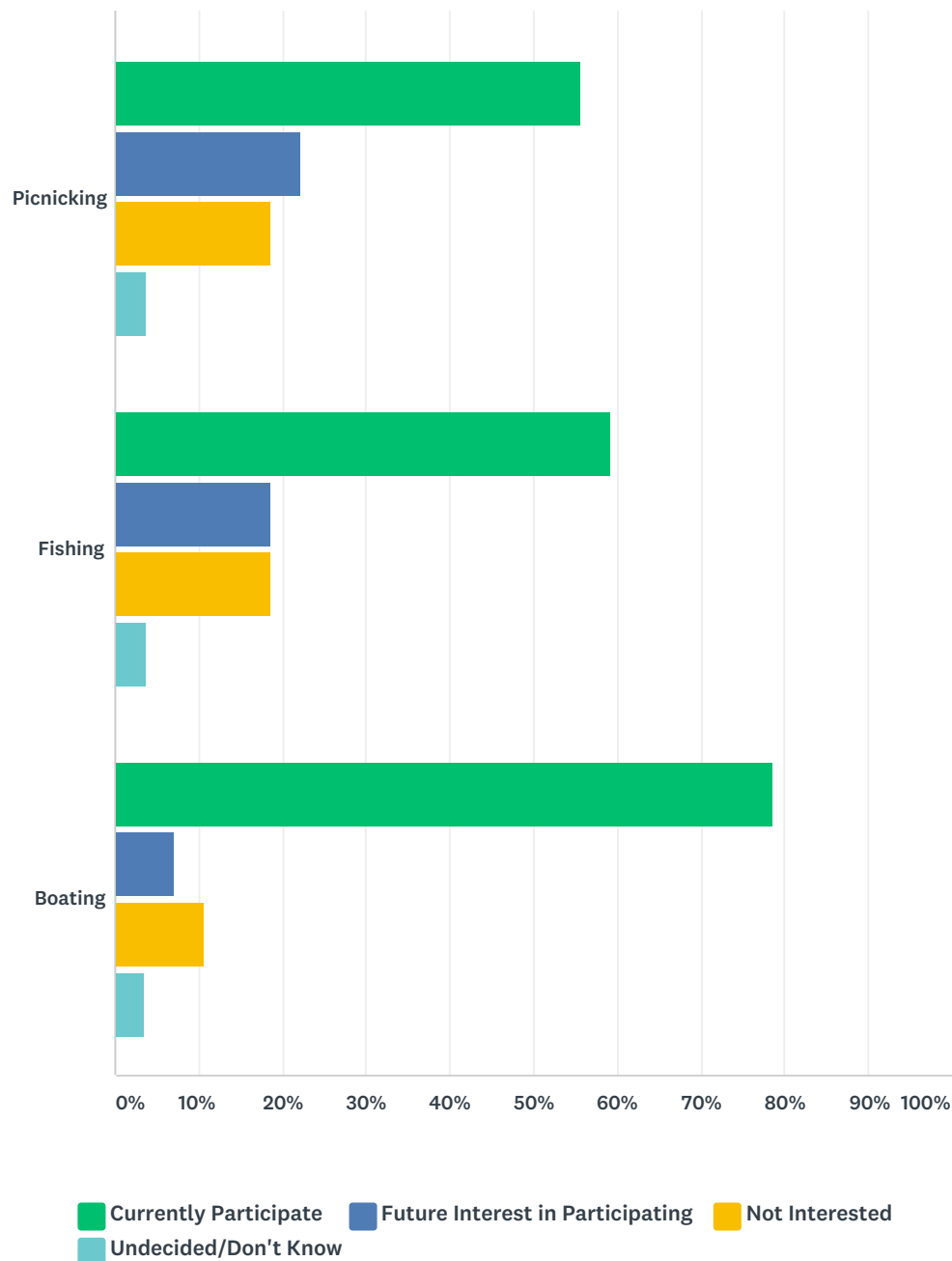
Answered: 29    Skipped: 12











	CURRENTLY PARTICIPATE	FUTURE INTEREST IN PARTICIPATING	NOT INTERESTED	UNDECIDED/DON'T KNOW	TOTAL
Walking or hiking	82.76% 24	17.24% 5	0.00% 0	0.00% 0	29
Jogging	29.63% 8	18.52% 5	40.74% 11	11.11% 3	27
Bicycling	50.00% 14	32.14% 9	10.71% 3	7.14% 2	28
Cross country skiing	7.41% 2	44.44% 12	29.63% 8	18.52% 5	27
Ice hockey	3.70% 1	14.81% 4	74.07% 20	7.41% 2	27
Field hockey	3.70% 1	0.00% 0	77.78% 21	18.52% 5	27

In-line hockey	3.70% 1	0.00% 0	77.78% 21	18.52% 5	27
Golf	32.14% 9	25.00% 7	39.29% 11	3.57% 1	28
Disc golf	11.11% 3	40.74% 11	40.74% 11	7.41% 2	27
Skateboarding	4.35% 1	4.35% 1	73.91% 17	17.39% 4	23
Ice skating	7.69% 2	61.54% 16	23.08% 6	7.69% 2	26
Rollerblading	3.85% 1	19.23% 5	61.54% 16	15.38% 4	26
Tennis	11.11% 3	29.63% 8	48.15% 13	11.11% 3	27
Soccer	3.85% 1	19.23% 5	61.54% 16	15.38% 4	26
Baseball	22.22% 6	18.52% 5	48.15% 13	11.11% 3	27
Softball	19.23% 5	19.23% 5	50.00% 13	11.54% 3	26
Basketball	29.63% 8	18.52% 5	44.44% 12	7.41% 2	27
Football	11.11% 3	3.70% 1	70.37% 19	14.81% 4	27
Volleyball	7.41% 2	29.63% 8	55.56% 15	7.41% 2	27
Pickleball	3.57% 1	25.00% 7	39.29% 11	32.14% 9	28
Picnicking	55.56% 15	22.22% 6	18.52% 5	3.70% 1	27
Fishing	59.26% 16	18.52% 5	18.52% 5	3.70% 1	27
Boating	78.57% 22	7.14% 2	10.71% 3	3.57% 1	28



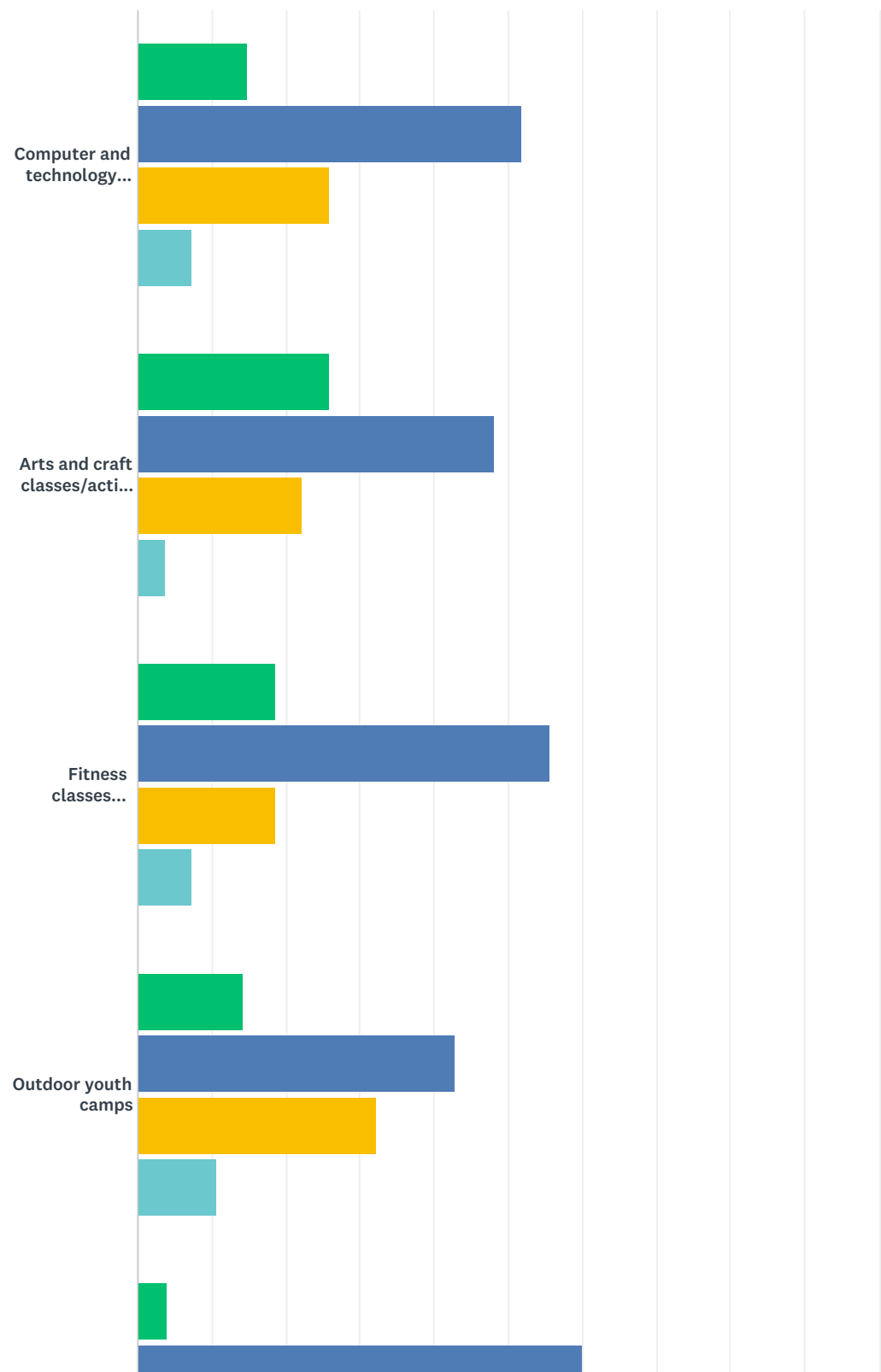
## Q10 Are there any other physical recreational activities that were not listed that you or other members of your family would be interested in now or in the future? (Write-in up to 3 activities)

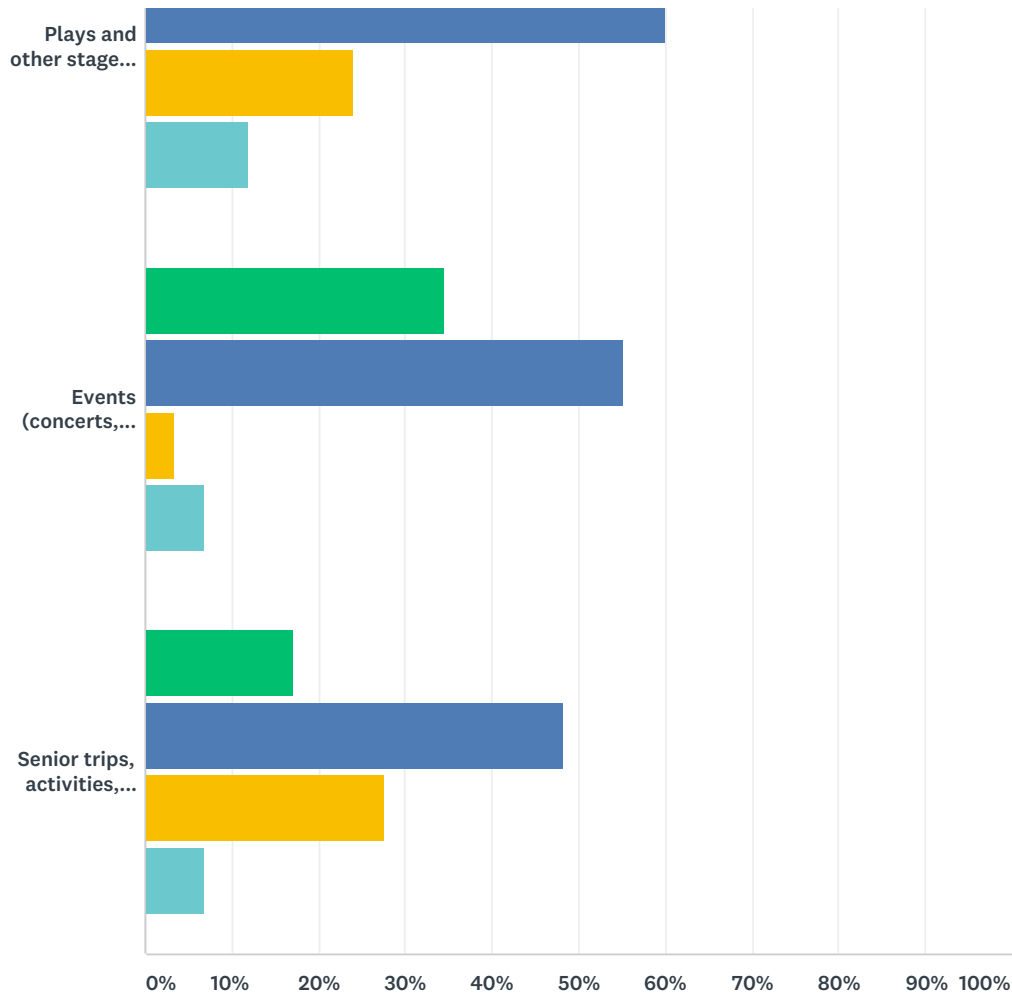
Answered: 12 Skipped: 29

#	RESPONSES	DATE
1	Snowshoeing	1/8/2018 2:47 PM
2	Shuffleboard; lawn bowling; snow shoeing	1/8/2018 2:45 PM
3	Swimming	1/8/2018 2:41 PM
4	Sailing Kayaking windsurf (very popular from Oden Park)	12/26/2017 12:29 PM
5	We need safer access to bike paths. We need crosswalks or signals near the Windjammer Marina and Crooked Lake Yacht Club. The majority of residents reside on the lake side and there is no safe way to get to the bike path. Please improve this with a crosswalk or bridge or cross light so that this valuable bike path can be accessed more safely.	12/7/2017 6:50 PM
6	We quiet places to enjoy the birds and other in-town wold life.	12/6/2017 12:04 AM
7	Bowling Kyaking	12/5/2017 9:05 AM
8	Snow shoeing	11/22/2017 6:05 PM
9	No, for our age my husband does walk & is a member of a gym. I am handicapped & unable to walk any distance. A few of my answers to the above were for my grandchildren	11/22/2017 1:27 PM
10	Gardening for food, rock climbing	11/22/2017 12:46 PM
11	Skiing, lessons for the little ones	11/22/2017 12:38 PM
12	Maybe a couple horse shoe events	11/22/2017 12:18 PM

Q11 The following is a list of non-sport recreational activities. Please mark the answer that most accurately describes you and/or your family's participation.

Answered: 30   Skipped: 11





■ Currently Participate
 ■ Future Interest in Participating
 ■ Not Interested
 ■ Undecided/Don't Know

	CURRENTLY PARTICIPATE	FUTURE INTEREST IN PARTICIPATING	NOT INTERESTED	UNDECIDED/DON'T KNOW	TOTAL
Computer and technology classes	14.81% 4	51.85% 14	25.93% 7	7.41% 2	27
Arts and craft classes/activities	25.93% 7	48.15% 13	22.22% 6	3.70% 1	27
Fitness classes (aerobics, dance, etc.)	18.52% 5	55.56% 15	18.52% 5	7.41% 2	27
Outdoor youth camps	14.29% 4	42.86% 12	32.14% 9	10.71% 3	28
Plays and other stage productions	4.00% 1	60.00% 15	24.00% 6	12.00% 3	25
Events (concerts, movies in the park, etc.)	34.48% 10	55.17% 16	3.45% 1	6.90% 2	29
Senior trips, activities, meals	17.24% 5	48.28% 14	27.59% 8	6.90% 2	29

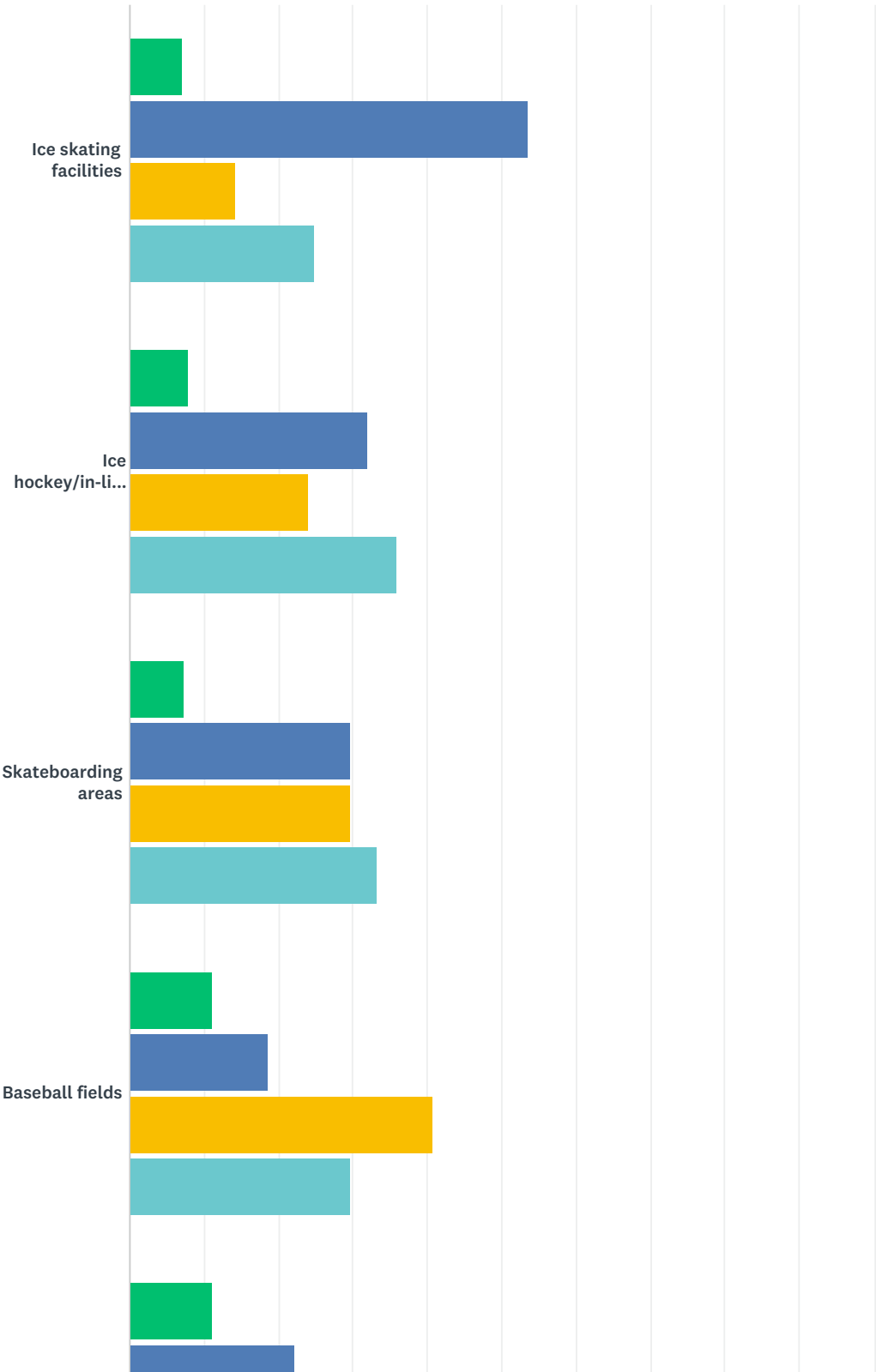
**Q12 Are there any other non-sport recreational activities that were not listed that you or other members of your family would be interested in now or in the future? (Write-in up to 3 activities)**

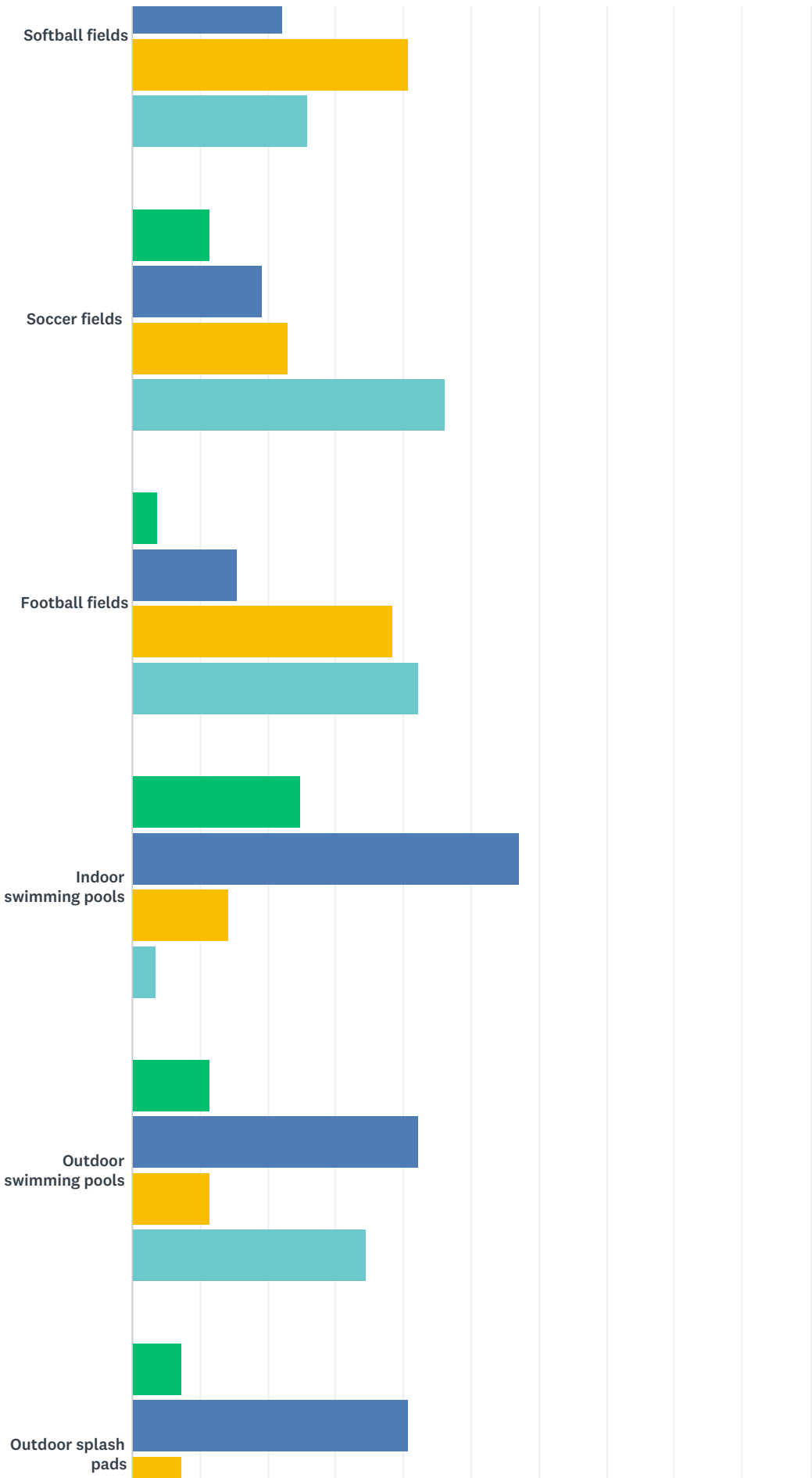
Answered: 2   Skipped: 39

#	RESPONSES	DATE
1	No	11/22/2017 1:29 PM
2	Gardening for food	11/22/2017 12:48 PM

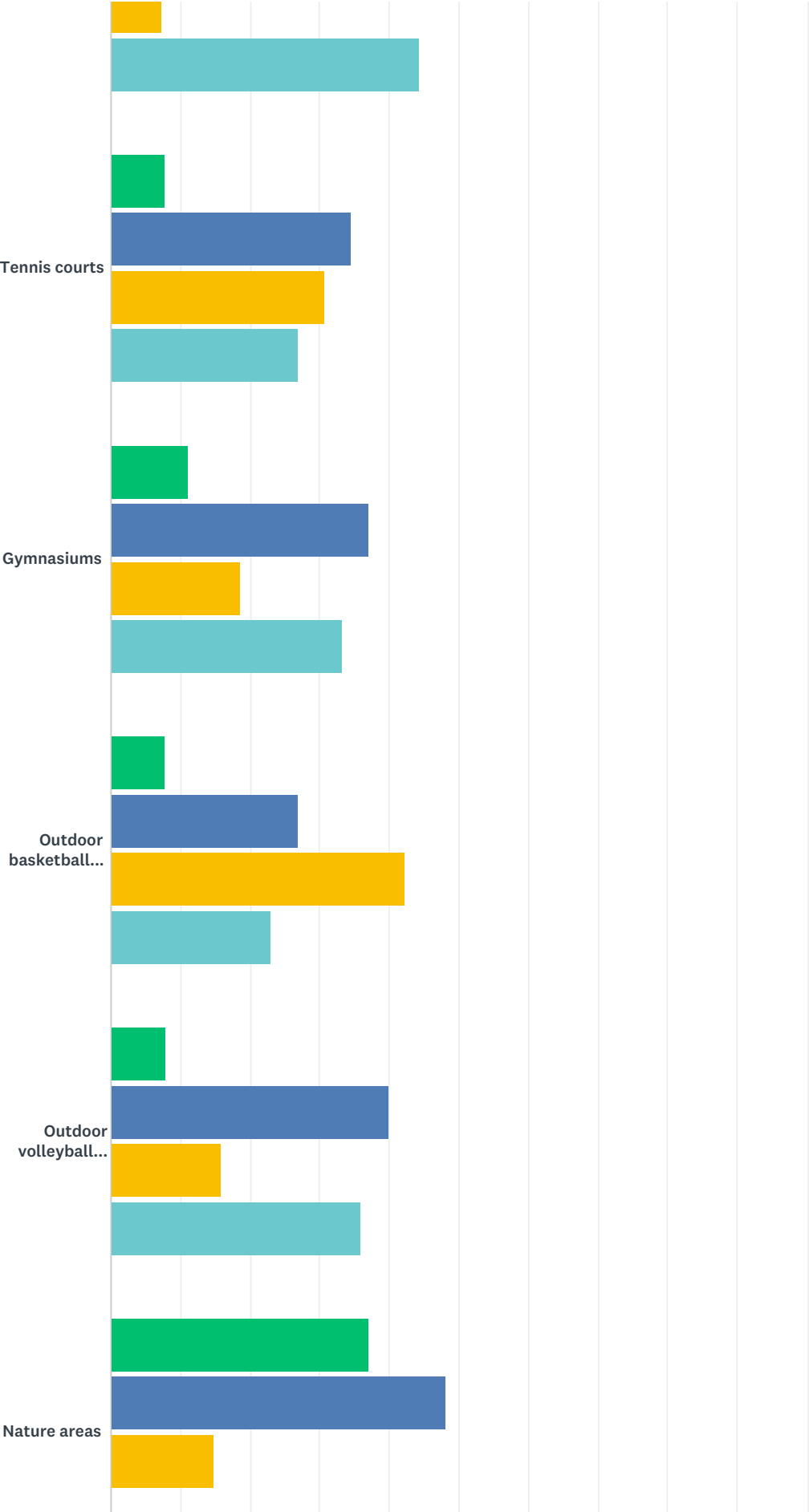
Q13 The following list includes several specific types of recreational facilities. For each facility listed, please mark the answer that best represents your opinion related to the amount of each facility available.

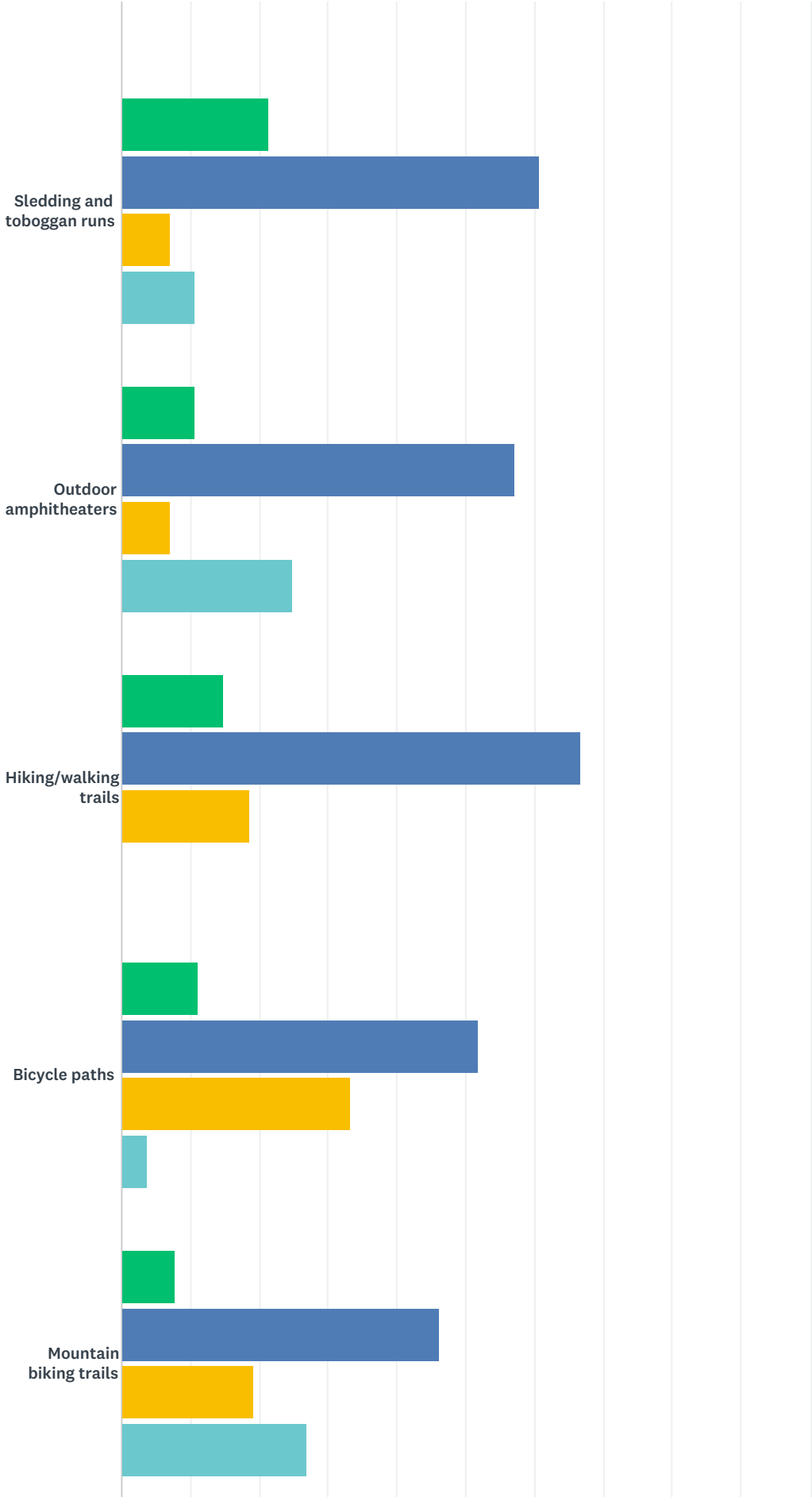
Answered: 29    Skipped: 12

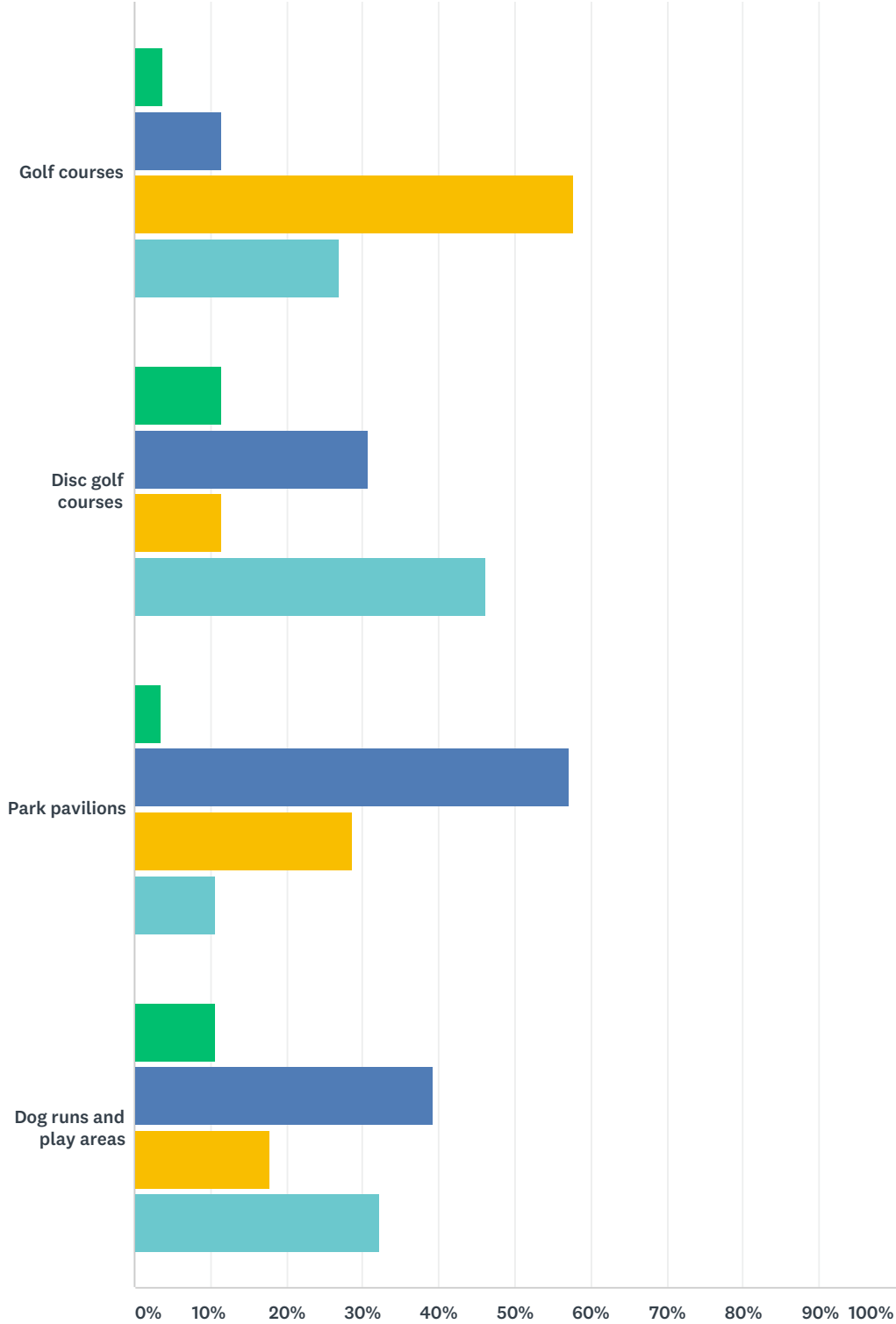












Many More Should be Developed    More Should be Developed  
Enough are Available Now    Undecided/Don't Know

	MANY MORE SHOULD BE DEVELOPED	MORE SHOULD BE DEVELOPED	ENOUGH ARE AVAILABLE NOW	UNDECIDED/DON'T KNOW	TOTAL
Ice skating facilities	7.14% 2	53.57% 15	14.29% 4	25.00% 7	28

## Alanson/Littlefield Parks and Recreation Survey

SurveyMonkey

Ice hockey/in-line hockey facilities	8.00% 2	32.00% 8	24.00% 6	36.00% 9	25
Skateboarding areas	7.41% 2	29.63% 8	29.63% 8	33.33% 9	27
Baseball fields	11.11% 3	18.52% 5	40.74% 11	29.63% 8	27
Softball fields	11.11% 3	22.22% 6	40.74% 11	25.93% 7	27
Soccer fields	11.54% 3	19.23% 5	23.08% 6	46.15% 12	26
Football fields	3.85% 1	15.38% 4	38.46% 10	42.31% 11	26
Indoor swimming pools	25.00% 7	57.14% 16	14.29% 4	3.57% 1	28
Outdoor swimming pools	11.54% 3	42.31% 11	11.54% 3	34.62% 9	26
Outdoor splash pads	7.41% 2	40.74% 11	7.41% 2	44.44% 12	27
Tennis courts	7.69% 2	34.62% 9	30.77% 8	26.92% 7	26
Gymnasiums	11.11% 3	37.04% 10	18.52% 5	33.33% 9	27
Outdoor basketball courts	7.69% 2	26.92% 7	42.31% 11	23.08% 6	26
Outdoor volleyball courts	8.00% 2	40.00% 10	16.00% 4	36.00% 9	25
Nature areas	37.04% 10	48.15% 13	14.81% 4	0.00% 0	27
Sledding and toboggan runs	21.43% 6	60.71% 17	7.14% 2	10.71% 3	28
Outdoor amphitheaters	10.71% 3	57.14% 16	7.14% 2	25.00% 7	28
Hiking/walking trails	14.81% 4	66.67% 18	18.52% 5	0.00% 0	27
Bicycle paths	11.11% 3	51.85% 14	33.33% 9	3.70% 1	27
Mountain biking trails	7.69% 2	46.15% 12	19.23% 5	26.92% 7	26
Golf courses	3.85% 1	11.54% 3	57.69% 15	26.92% 7	26
Disc golf courses	11.54% 3	30.77% 8	11.54% 3	46.15% 12	26
Park pavilions	3.57% 1	57.14% 16	28.57% 8	10.71% 3	28
Dog runs and play areas	10.71% 3	39.29% 11	17.86% 5	32.14% 9	28

**Q14 Are there any other recreational facilities for either physical or non-sport recreation that were not listed that you or other members of your family would be interested in now or in the future? (Write-in up to 3 facilities)**

Answered: 6   Skipped: 35

#	RESPONSES	DATE
1	Kayak launch area?	1/8/2018 2:48 PM
2	Sports arena - pavilion - park	1/8/2018 2:46 PM
3	beach access to Crooked Lake, beach Volleyball, Outdoor chess, BETTER, SAFER ACCESS TO BIKE PATHS!!!	12/7/2017 6:53 PM
4	Love the idea of sledding hill!	11/22/2017 6:07 PM
5	No	11/22/2017 1:31 PM
6	Rock climbing gym, community green house	11/22/2017 12:50 PM

## APPENDIX B



**Village of Alanson  
and  
Littlefield Township  
Joint Village and Township  
Recreation Plan,  
2018-2022**

**Proof of Publication**

**Notice of Public Hearing  
and  
Availability of Draft Plan  
for Review**

STATE OF MICHIGAN)  
COUNTY OF EMMET)

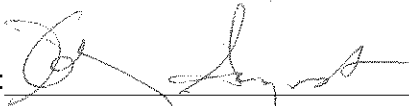
Notice is hereby given that a public hearing will be held during a special joint meeting of the Alanson Village Council and the Littlefield Township Board of Trustees on Thursday, February 22, 2018, at 6:00 p.m., at the Village/Township Community Building, located at 7631 U.S. 31, Alanson, Michigan, 48706. The public hearing is being held to receive comments from citizens and consider the adoption of the Village of Alanson/Littlefield Township Recreation Plan, 2018-2022.

A Recreation Plan assists the community in identifying recreation needs. The plan will serve as a guide to document priorities for improvements. When approved by the Michigan Department of Natural Resources (MDNR), the plan qualifies the Village and Township for recreation grants, which are administered through the MDNR. The proposed plan includes a community description, an overview of the administrative structure of the Township, an inventory of existing facilities, a recreation needs analysis, goals and objectives, and capital improvement priorities for the next five years.

A copy of the draft Recreation Plan 2018-2022 is available for public review at the Village/Township Community Building, located at the above noted address, as well as on both the Village website ([www.villageofalanson.com](http://www.villageofalanson.com)) and Township website ([www.littlefieldtwp.org](http://www.littlefieldtwp.org)).  
(L-1/19)


Hilary August

BEING DULY SWORN, DEPOSES AND SAYS THAT she is the Principal clerk of the Petoskey News Review, a newspaper printed and published in the County of Emmet, in said state; that the annexed printed notice was published in said newspaper on: January 19 2018

signed: 

Hilary August

Subscribed and sworn to before me this  
28th of February, 2018

signed: 

Shelli Dennis

Notary Public in Emmet County, Michigan  
My commission expires May 23, 2023.

## APPENDIX C

**Village of Alanson  
and  
Littlefield Township  
Joint Village and Township  
Recreation Plan,  
2018-2022**

**Proof of Publication**

**Notice of Public Hearing  
and  
Availability of Draft Plan  
for Review**

STATE OF MICHIGAN)  
COUNTY OF EMMET)


Notice is hereby given that a public hearing will be held during a special joint meeting of the Alanson Village Council and the Littlefield Township Board of Trustees on Thursday, February 22, 2018, at 6:00 p.m., at the Village/Township Community Building, located at 7631 U.S. 31, Alanson, Michigan, 48706. The public hearing is being held to receive comments from citizens and consider the adoption of the Village of Alanson/Littlefield Township Recreation Plan, 2018-2022.

A Recreation Plan assists the community in identifying recreation needs. The plan will serve as a guide to document priorities for improvements. When approved by the Michigan Department of Natural Resources (MDNR), the plan qualifies the Village and Township for recreation grants, which are administered through the MDNR. The proposed plan includes a community description, an overview of the administrative structure of the Township, an inventory of existing facilities, a recreation needs analysis, goals and objectives, and capital improvement priorities for the next five years.

A copy of the draft Recreation Plan 2018-2022 is available for public review at the Village/Township Community Building, located at the above noted address, as well as on both the Village website ([www.villageofalanson.com](http://www.villageofalanson.com)) and Township website ([www.littlefieldtwp.org](http://www.littlefieldtwp.org)).  
(L-1/19)


Hilary August

BEING DULY SWORN, DEPOSES AND SAYS THAT she is the Principal clerk of the Petoskey News Review, a newspaper printed and published in the County of Emmet, in said state; that the annexed printed notice was published in said newspaper on: January 19 2018

signed: 

Hilary August

Subscribed and sworn to before me this  
28th of February, 2018

signed: 

Shelli Dennis

Notary Public in Emmet County, Michigan  
My commission expires May 23, 2023.

## APPENDIX D

**Littlefield Township Joint Public Hearing**  
**for the Village of Alanson/Littlefield Township Recreation Plan 2018-2022**  
**Date: February 22, 2018      Time: 6:00 PM**

Township Supervisor Damien Henning opened the Public Hearing on behalf of the Township and Greg Babcock did the same for the Village of Alanson. Present from the Township was Sondra Festerling, Clerk, Dean Morford, Trustee, and Kim Shomin, Treasurer. Absent from the Township Katie Derrohn, Trustee. Present from the Village of Alanson was Marvin Blumke, Preston Grobaski, Doug Larson, Chris Adams, David Stepanovich, and Jennifer Carson. Guest: Adam Young from Wade Trim and Ted Festerling.

The meeting was opened for Public Comment. Adam Young gave a brief overview. This meeting was posted in the Petoskey News Review over 30 days ago and has been added to the Township & Village websites for the past 30 days as well. Tonight's meeting gives the public a chance to voice their comments or any concerns and ask any questions. This Recreation Plan is an update to the 2012 Plan. The scope of work was limited but there were areas that needed updating including the Census figures. What is found in the Recreation Plan is dictated by the Department of Natural Resources, so if you want to have your plan approved by the DNR the plan has to contain certain informational elements. This plan is in compliance with the requirements. There has been updates for the changes that have occurred over the last 5 years such as new park land that was acquired or updates to existing facilities or parks. The plan also includes updated information on new park or recreational needs in the community. There was an opinion survey that was placed online for residents to give their input from the end of November to end of December. The survey was also located in hard copy at the Alanson Public Library. In the 2018-2022 Plan under the Basis for Action/ Goals and Objectives chapter there is a summary of the opinion survey. One of the benefits to having a Rec. Plan in place and approved by the DNR it enables you to apply for grant funding for the next 5 years. The DNR has 3 primary grant programs: The Trust Fund, The Land and Water Conservation Fund, and The Recreational Passport Fund. D. Henning made a comment that both Greg and him have done a fair amount of updating and since the last Rec. Plan both the Village and Township has made some pretty decent advances in terms of recreational property. Jennifer Carson asked the question of how much money per grant is typically seen. Adam responded by saying it varies based on the program. The Trust fund is the largest funding pool made available and you can seek up to a \$300,000.00 grant and it is a 25% match which would put the project totaling \$600,000.00. The Land and Water Conservation Fund is a maximum of \$150,000.00 grant request with a minimum of 50% match, and The Recreational Passport Fund is also \$150,000.00 with a minimum of 25% match. There were no further questions or comments.

At 6:15 Greg Babcock closed the Public Comment section of the meeting.

Damien Henning, Township Supervisor, offered Resolution (#3 of 2018) to Adopt the 2018-2022 Village of Alanson/Littlefield Township Recreation Plan. This resolution was supported by Dean Morford. The resolution was adopted by a Roll Call Vote: Dean Morford, Kim Shomin, Damien Henning, and Sondra Festerling Yes, 0- No and 1 Absent: Katie Derrohn. The formal resolution was certified by Sondra Festerling, Clerk. An original copy was given to Chris Adams for reporting and the Township's copy will be placed in the Resolution Book.

The Village of Alanson followed with their own Resolution to Adopt the 2018 -2022 Village of Alanson/Littlefield Township Recreation Plan.

Damien Henning made the Motion to adjourn 6:18PM. The Village did the same.

Sondra Festerling, Clerk

Village Of Alanson

7631 US 31 N Alanson, Mi. 49706

Joint Meeting with Littlefield Township Minutes (DRAFT)

5 Year Rec Plan

February 22, 2018

1. At 6:03 pm Village President Greg Babcock called the village portion to order and roll call was taken with Trustee Doug Larson, Trustee Marv Blumke, Trustee Preston Grobaski, Trustee Dave Stepanovich and President Greg Babcock in attendance. None absent
2. At 6:04 Littlefield Township Supervisor Damien Henning called the township portion to order with Treasurer Kim Shomin, Trustee Dean Morford and Clerk Sondra Festerling all present with Trustee Katie Derrohn absent.
3. At 6:05 Village President Greg Babcock opened public comments
  - Adam Young with Wade Trim gave a brief overview on the rec plan. The plan has been updated to reflect both village and township improvements already made. The rec plan should be used as a guide for improvements and is also necessary to apply for grants thru the DNR. Village Treasurer Jennifer Carson asked Mr. Young the amount of each grant. The Trust grant is the largest with an amount up to \$300000.00, the Land & Water Grant is up to \$150000.00 and the Rec Plan Grant is up to \$150000.00
4. At 6:15 Village President Greg Babcock closed public comment
5. Littlefield Township Supervisor Damien Henning made a motion for the Littlefield Township board to approve the presented Rec Plan with results as follows:
  - Treasurer Kim Shomin: Yes
  - Clerk Sondra Festerling: Yes
  - Trustee Dean Morford: Yes
  - Supervisor Damien Henning: Yes
  - Absent: Trustee Katie DerrohnMotion to approve 5 Year Rec Plan approved by Littlefield Township Board.
6. Village President Greg Babcock made a motion for the Village of Alanson board to approve the presented Rec Plan with results as follows:
  - Trustee Preston Grobaski: Yes
  - Trustee Doug Larson: Yes
  - Trustee Marv Blumke: Yes
  - Trustee Dave Stepanovich
  - President Greg Babcock: YesAll in favor, motion to approve the 5-year Rec Plan approved by the Village of Alanson
7. At 6:18 pm Supervisor Damien Henning adjourned the township portion of the meeting.
8. At 6:17 President Greg Babcock adjourned the village portion of the meeting.

Chris Adams

Village Clerk of Alanson

## APPENDIX E

**VILLAGE OF ALANSON / LITTLEFIELD TOWNSHIP  
RECREATION PLAN 2018-2022**

Village of Alanson  
Emmet County, Michigan

WHEREAS, the Village of Alanson has undertaken a planning process to determine the recreation and natural resource conservation needs and desires of its residents during a five year period covering the years 2018 through 2022, and

WHEREAS, the Village of Alanson has entered into this planning process in collaboration with Littlefield Township, and

WHEREAS, the combined area of the aforementioned local units of government constitutes the planning area, and

WHEREAS, the Alanson Village Council is of the understanding that the Littlefield Township Board intends to pass a similar resolution of adoption of the Recreation Plan 2018-2022, and

WHEREAS, the Village of Alanson began the process of developing a recreation plan in accordance with the most recent guidelines developed by the Department of Natural Resources and made available to local communities, and

WHEREAS, residents of the Village of Alanson were provided with a well-advertised opportunity during the development of the draft plan to express opinions, ask questions, and discuss all aspects of the recreation plan, and

WHEREAS, the public was given a well-advertised opportunity and reasonable accommodations to review the draft plan for a period of at least 30 days, and

WHEREAS, a public hearing was held on February 22, 2018 at the Village/Township Community Building to provide an opportunity for all residents of the planning area to express opinions, ask questions, and discuss all aspects of the recreation plan, and

WHEREAS, after the public hearing, the Alanson Village Council voted to adopt said recreation plan.

NOW, THEREFORE BE IT RESOLVED the Alanson Village Council hereby adopts the Village of Alanson/Littlefield Township Recreation Plan 2018-2022.

Yeas: 5      Nays: 0      Absent: 0

Greg Babcock  
Marv Blunke  
Preston Grobaski  
Doug Larson  
Dale Stepenavich

I, Chris Adams, do hereby certify that the foregoing is a true and original copy of a resolution adopted by the Alanson Village Council at a Special Meeting thereof held on the 22<sup>nd</sup> day of February, 2018.

Chris Adams  
signature



## APPENDIX F

**VILLAGE OF ALANSON / LITTLEFIELD TOWNSHIP  
RECREATION PLAN 2018-2022**

Littlefield Township  
Emmet County, Michigan  
Resolution #3 of 2018

WHEREAS, Littlefield Township has undertaken a planning process to determine the recreation and natural resource conservation needs and desires of its residents during a five year period covering the years 2018 through 2022, and

WHEREAS, Littlefield Township has entered into this planning process in collaboration with the Village of Alanson, and

WHEREAS, the combined area of the aforementioned local units of government constitutes the planning area, and

WHEREAS, the Littlefield Township Board is of the understanding that the Alanson Village Council intends to pass a similar resolution of adoption of the Recreation Plan 2018-2022, and

WHEREAS, Littlefield Township began the process of developing a recreation plan in accordance with the most recent guidelines developed by the Department of Natural Resources and made available to local communities, and

WHEREAS, residents of Littlefield Township were provided with a well-advertised opportunity during the development of the draft plan to express opinions, ask questions, and discuss all aspects of the recreation plan, and

WHEREAS, the public was given a well-advertised opportunity and reasonable accommodations to review the draft plan for a period of at least 30 days, and

WHEREAS, a public hearing was held on February 22, 2018 at the Village/Township Community Building to provide an opportunity for all residents of the planning area to express opinions, ask questions, and discuss all aspects of the recreation plan, and

WHEREAS, after the public hearing, the Littlefield Township Board voted to adopt said recreation plan.

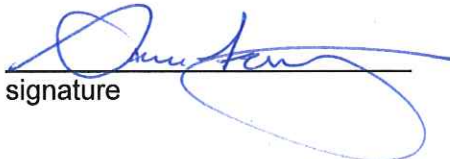
NOW, THEREFORE BE IT RESOLVED the Littlefield Township Board hereby adopts the Village of Alanson/Littlefield Township Recreation Plan 2018-2022.

Yeas: Damien Henning, Supervisor, Dean Morford, Trustee, Kim Shomin, Treasurer, Sondra Festerling, Clerk

Nays: None

Absent: Katie Derrohn, Trustee

I, Sondra Festerling the duly elected and acting Clerk of Littlefield Township, do hereby certify that the foregoing is a true and original copy of a resolution adopted by the Littlefield Township Board at a Special Meeting thereof held on the 22<sup>nd</sup> day of February, 2018.

  
signature

## APPENDIX G



## Letter of Transmittal

WT189-02

500 Griswold Street, Suite 2500 • Detroit, MI 48226  
313.961.3650 • 313.961.0898 fax • www.wadetrtrim.com

*If transmitted items are not as noted, notify writer immediately.*

To: Emmet County Planning & Zoning  
John R. Watson Community Resource Center  
3434 Harbor-Petoskey Rd., Suite E  
Harbor Springs, MI 49740

Date: February 28, 2018

Attn: Tammy Doernenburg, Planning and Zoning Director

Transmitted By: ☒ Regular Mail ☐ Overnight Delivery  
☐ Hand Delivered  
☐ Picked Up By:  
☐ Other:

Re: Village of Alanson/Littlefield Township Recreation  
Plan 2018-2022

We are transmitting 1 copy of the following:

<input type="checkbox"/> Certificate for Payment No.	<input type="checkbox"/> Discs	<input type="checkbox"/> Prints	<input type="checkbox"/> Specs.
<input type="checkbox"/> Contract Change Order No.	<input type="checkbox"/> Drawings	<input type="checkbox"/> Product Literature	<input type="checkbox"/> Tracings
<input type="checkbox"/> Construction Change Req. No.	<input type="checkbox"/> Field Measure Plans	<input type="checkbox"/> Samples	<input type="checkbox"/> Work Orders No.
<input type="checkbox"/> Copy of Letter	<input type="checkbox"/> Plans	<input type="checkbox"/> Shop Drawings	_____
<input checked="" type="checkbox"/> Other: Village of Alanson/Littlefield Township Recreation Plan 2018-2022			

For your: ☐ Action ☐ As Requested ☐ Information ☐ Review/Comment ☐ Use  
☐ Approval ☐ Distribution ☒ Records /Files ☐ Signature

Remarks: Enclosed you will find a copy of the Village of Alanson/Littlefield Township Recreation Plan 2018-2022. This plan was adopted by the Village Council and Township Board on February 22, 2018. In order to promote regional cooperation in providing recreation services, the Village and Township request that your office keep a copy of this recreation plan on file.

Job No. ALA2005-01G

By: Adam Young, AICP

cc:



## Letter of Transmittal

WT189-02

500 Griswold Street, Suite 2500 • Detroit, MI 48226  
313.961.3650 • 313.961.0898 fax • www.wadetrim.com

*If transmitted items are not as noted, notify writer immediately.*

To: Networks Northwest  
PO Box 506  
Traverse City, MI 49685

Date: February 28, 2018

Transmitted By: ☒ Regular Mail ☐ Overnight Delivery

Attn: Regional Planning

☐ Hand Delivered

☐ Picked Up By:

Re: Village of Alanson/Littlefield Township Recreation  
Plan 2018-2022

☐ Other:

We are transmitting 1 copy of the following:

<input type="checkbox"/> Certificate for Payment No.	<input type="checkbox"/> Discs	<input type="checkbox"/> Prints	<input type="checkbox"/> Specs.
<input type="checkbox"/> Contract Change Order No.	<input type="checkbox"/> Drawings	<input type="checkbox"/> Product Literature	<input type="checkbox"/> Tracings
<input type="checkbox"/> Construction Change Req. No.	<input type="checkbox"/> Field Measure Plans	<input type="checkbox"/> Samples	<input type="checkbox"/> Work Orders No.
<input type="checkbox"/> Copy of Letter	<input type="checkbox"/> Plans	<input type="checkbox"/> Shop Drawings	<input type="checkbox"/>
<input checked="" type="checkbox"/> Other: Village of Alanson/Littlefield Township Recreation Plan 2018-2022			

For your: ☐ Action ☐ As Requested ☐ Information ☐ Review/Comment ☐ Use  
☐ Approval ☐ Distribution ☒ Records /Files ☐ Signature

Remarks: Enclosed you will find a copy of the Village of Alanson/Littlefield Township Recreation Plan 2018-2022. This plan was adopted by the Village Council and Township Board on February 22, 2018. In order to promote regional cooperation in providing recreation services, the Village and Township request that your office keep a copy of this recreation plan on file.

Job No. ALA2005-01G

By: Adam Young, AICP

cc:

## APPENDIX H

**COMMUNITY PARK, RECREATION, OPEN SPACE, AND  
GREENWAY PLAN CERTIFICATION CHECKLIST**

By Authority of Parts 19, 703 and 716 of Act 451, P.A. 1994, as amended, submission of this  
information is required for eligibility to apply for grants

**INSTRUCTIONS:** Complete, obtain certification signatures and submit this checklist with a locally adopted recreation plan.

All recreation plans are required to meet the content and local approval standards listed in this checklist and as outlined in the *Guidelines for the Development of Community Park, Recreation, Open Space and Greenway Plans* provided by the Michigan Department of Natural Resources (DNR). Plans must be submitted to the DNR **with** a completed checklist that has been signed by an authorized official(s) of the local unit of government(s) submitting the plan. Plans may be submitted at any time of the year, but no later than March 1 of the year the local unit of government is applying for grants.

**PLAN INFORMATION**

Name of Plan:

Village of Alanson/Littlefield Township Recreation Plan 2018-2022

List the community names (including school districts) that are covered under the plan and have passed a resolution adopting the plan.

County

Month and year plan adopted by the community's governing body

Village of Alanson

Emmet

February 2018

Littlefield Township

Emmet

February 2018

**PLAN CONTENT**

**INSTRUCTIONS:** Please check each box to certify that the listed information is included in the final plan.

☒ **1. COMMUNITY DESCRIPTION**☒ **2. ADMINISTRATIVE STRUCTURE**☒ Roles of Commission(s) or Advisory Board(s)☒ Department, Authority and/or Staff Description and Organizational Chart☒ Annual and Projected Budgets for Operations, Maintenance, Capital Improvements and Recreation Programming☒ Current Funding Sources☒ Role of Volunteers☒ Relationship(s) with School Districts, Other Public Agencies or Private Organizations**Regional Authorities or Trailway Commissions Only:**☐ Description of the Relationship between the Authority or Commission and the Recreation Departments of Participating Communities☐ Articles of Incorporation☒ **3. RECREATION INVENTORY**☒ Description of Methods Used to Conduct the Inventory☒ Inventory of all Community Owned Parks and Recreation Facilities☒ Location Maps (site development plans recommended but not required)☒ Accessibility Assessment☒ Status Report for all Grant-Assisted Parks and Recreation Facilities☒ Waterways Inventory (if applicable)☒ **4. RESOURCE INVENTORY (OPTIONAL)**☒ **5. DESCRIPTION OF THE PLANNING PROCESS**



☒ **6. DESCRIPTION OF THE PUBLIC INPUT PROCESS**

- ☒ Description of the Method(s) Used to Solicit Public Input Before or During Preparation of the Plan, Including a Copy of the Survey or Meeting Agenda and a Summary of the Responses Received

- ☒ Copy of the Notice of the Availability of the Draft Plan for Public Review and Comment

Date of the Notice January 19, 2018

Type of Notice Newspaper

Plan Location Village/Township Community Bldg.

Duration of Draft Plan Public Review Period (Must be at Least 30 Days) 35

- ☒ Copy of the Notice for the Public Meeting Held after the One Month Public Review Period and Before the Plan's Adoption by the Governing Body(ies)

Date of Notice January 19, 2018

Name of Newspaper Petoskey News Review

Date of Meeting February 22, 2018

- ☒ Copy of the Minutes from the Public Meeting

☒ **7. GOALS AND OBJECTIVES**

☒ **8. ACTION PROGRAM**

☒ **9. POST-COMPLETION SELF-CERTIFICATION REPORT(S)**

**PLAN ADOPTION DOCUMENTATION**

**APPROVAL DOCUMENTATION:** For multi-jurisdictional plans, each local unit of government must pass a resolution adopting the plan. Prepare and attach a separate page for each unit of government included in the plan.

- ☒ 1. Official resolution of adoption by the governing body dated: February 22, 2018
- ☐ 2. Official resolution of the \_\_\_\_\_ Commission or Board, recommending adoption of the plan by the governing body, dated: \_\_\_\_\_
- ☒ 3. Copy of letter transmitting adopted plan to County Planning Agency dated: February 28, 2018
- ☒ 4. Copy of letter transmitting adopted plan to Regional Planning Agency dated: February 28, 2018

**OVERALL CERTIFICATION**

**NOTE:** For multi-jurisdictional plans, Overall Certification must include the signature of each local unit of government. Prepare and attach a separate signature page for each unit of government included in the plan.

*I hereby certify that the recreation plan for*

Village of Alanson / Littlefield Township

(Local Unit of Government)

*above and as set forth by the DNR.*

*includes the required content, as indicated*

*Donna H. H. - SUPERVISOR*  
Authorized Official for the Local Unit of Government

*2-28-18*  
Date

**This completed checklist must be uploaded in MiRecGrants.**





4241 Old US 27 S, Suite 1  
Gaylord, Michigan 49734  
989-732-3584  
800-968-4440  
[www.wadetrim.com](http://www.wadetrim.com)

