

Littlefield TOWNSHIP

Est 1877

WINTER 2018 NEWSLETTER

ALANSON • ODEN • PONSHEWAING

Emmet County, P.O. Box 188 Alanson, Michigan 49706



Alanson Littlefield Fire Department WINTER FIRE SAFETY

The fire board would like to remind everyone to practice fire safety in your home during the winter season.

DID YOU KNOW

- *Heating equipment, whether portable heaters or furnaces are the cause of half of all home fires. **Solution:*** Keep anything flammable, that includes your kids and pets, at least three feet away from any heating equipment whether it's a fireplace, furnace, wood stove, portable heater or a kerosene heater. Don't overlook having your furnace inspected or your wood stove chimney cleaned annually.
- *Cooking fires occur more often on Thanksgiving Day than any other day of the year. **Solution:*** Never leave any food unattended while cooking, even if the stove is only on warm.
- *Fires that start in the bedroom make up 73% of all house fire fatalities? **Solution:*** Make it a rule to never smoke in the bedroom. Also, never leave candles unattended - extinguish them before you go to sleep.
- *Homes built in the 20th century weren't meant to carry the electrical loads of the 21st century. **Solution:*** Stop using extension cords and adapters. Use only the electrical outlets you have. If you find yourself needing extension cords and adapters to keep up with the power demands, call an electrician and have additional outlets installed. The general rule of thumb is, "If it has a motor, it needs its own electrical circuit."



THREE BIG TIPS

Update your smoke alarm batteries (**today!**). Secondly, close bedroom doors when you retire. And third: Invest in a fire extinguisher as well as once you start cooking - you need to be in there!

Stay warm, stay safe.



Admiral's Point/Hay Lake Waterfront Access

The Admiral's Point/Hay Lake two grants are being processed by Gosling Czubak, who attended the November township meeting and presented a positive projection of the plan. When the DNR approves the dredging plans, bids will be sought. To get ready for the dredging, the township intended to move three buildings from the site, but only one of the buildings was up to code and was moved. The cost outweighed any benefit to move the other buildings so, for the time being, they will stay on Kurt Hoffman's property within Admiral's Point.



Photograph courtesy of www.fishweb.com

A common question heard is, "Where is Hay Lake?" This part of Crooked River known as Hay Lake, is a straight stretch of channel with marsh land on both sides. Before the river was dredged this area would flood into the small lake.

Wayne Meyer Retired

Wayne Meyer served on the Littlefield Township Board for 11 years and at the same time was chairperson for LT Planning & Zoning Committee. He then came back to the P&Z Committee for another 10 years. He also serviced on the sewer board for several years. "He will be so missed and we can not thank him enough for all the service and caring time he gave our Township," said Katie Derrohn - P&Z Committee Chair

ANNUAL CLEAN-UP CAMPAIGN

The Annual Community Clean Up will be held Saturday, May 4th, 2019. Littlefield residents are invited to bring bulky items not routinely collected by weekly garbage to the pick-up site on the corner of US 31 and M-68.

Our goal and commitment is to achieve and maintain an attractive and well maintained community for all our residents, visitors and businesses to enjoy. A Blight Enforcement Officer works in partnership with Littlefield Township residents and businesses to achieve these goals. Since our Blight Enforcement Officer is considered a part-time position, enforcement is complaint driven. Whenever a violation occurs, or is alleged to have occurred, two separate households, or businesses must file separate written, signed complaints with the Township Board.



Blight Enforcement Officer

Mike Vargo 231-838-3692
P.O. Box 166, Alanson, MI 49706
blight@littlefieldtwp.org

STATE MANDATED OFFICE HOURS

Instead of mailing your tax payment, you may pay in person on three different days. The Treasurer or Deputy will be at the Community Hall on US 31 for tax collection on:

Thurs, Dec. 27, 2018, 9-5

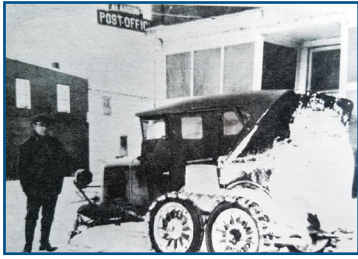
Thurs, Feb. 14, 2019, 9-5 (last day to pay taxes before interest is added)
Thurs, Feb. 28, 2019, 9-5. (last day before taxes are turned over to the county)

A Little Bit of History

LITTLEFIELD POST OFFICES



The first Littlefield area post office opened with the name Hinman



on January 17, 1877. An article written in 1935 by Petoskey businessman, George W. McCabe, includes the story of his family moving to a small log shanty a mile and a half southeast of Hinman, later to become known as Alanson. It was a snowy

Thanksgiving day as he stood in the wagon behind his distraught mother, listening to the wonderful tales of the driver about this new country and its great prospects. He writes, *We followed the old Cheboygan state road east of the Hinman post office which was a couple of miles north of Oden. This was the post office that supplied mail to many miles of territory. The postmistress was Mrs. Baid, and she did much to dry mother's tears in the few moments we stopped.*

In 1882 Alanson was officially founded and the Hinman post office was renamed and moved into the village. In 1892, Oden opened their first post office. For over a hundred years the old post office was on the corner of Main and US31. In 1982 it was moved to 8841 Main Street.

Photo is of Ben Armock, 1926 mail carrier, and his vehicle put together for the winter roads. History and photo are from "Alanson, Our Town" by Yolanda Banwell

Cemetery News

by Kim Morgan

We are compiling a database of the Veterans in the cemetery. Some of the Veterans markers contain information on 'Branch of Service' and any war the veteran was in. But there are many veterans that we don't have that information. If your relative is in the cemetery and you know their Military history, please call or send information to Kim Morgan, P.O. Box 143, Alanson, MI 49706 phone 231-529-5542

Make sure you check out the Veterans Memorial in the cemetery. It is an Eagle Scout Project for Samuel Lowery. As of this newsletter it is not quite complete but check it out in the spring!

Visitors to the cemetery: Please do not drive into the cemetery after there is snow on the ground. We have many headstones close to the sides of the road that easily get covered with snow.

Rules To Remember: #32 - No cremation ashes or markers may be placed on a lot without permission of the sexton. This ensures accurate cemetery records and correct placement of markers/headstones.

WINTER BIRD FEEDER TIPS

- Keep your feeders full: Winter birds need to stock up on calories especially for those long, cold winter nights.
- Be consistent and keep feeding through the winter: Birds grow accustomed to your feeders especially in severe weather when the snacks you offer may mean their very survival. If you leave home for an extended period, try to have a neighbor or friend keep the feeders going.
- Remember water: Birds can become dehydrated in winter even if surrounded by ice and snow.
- Stamp down the snow below: Ground-feeding birds such as doves and many sparrows will be able to gather up the seed that drop from the feeders.



This newsletter is created bi-annually for Littlefield Township by Key Creative. 231-548-3300

The thankful receiver bears a plentiful harvest. William Blake

FROM THE TREASURER'S OFFICE



I've been thinking about people that do things for the good of others without any personal gain. I started noticing it simply because I was at the receiving end of it so often when I first moved to my home in 1992 and was raising my boys alone. I had grown up

in a completely different type of culture and it sure was surprising. I really feel in debt to the people in this area. Later on, after I got my job with the township, I really became aware of how many people are involved in service to their community, mostly without recognition, and perhaps it's supposed to be that way. Just travel around through our town. The Library, museum, the Hillside Gardens and new buildings restored which had once been eyesores. Have you ever noticed the changes in the decorations and flowers at the Community Hall Building (flags on 4th of July, pumpkins in the fall, etc.) or the flower gardens on the Highway in Oden? All of these, and so much more were brought to you by volunteers. This town is full of wonderful things for the people that live here because of unnoticed volunteers. I pretty much see it every day.

Things To Remember About Your Taxes

- If this bill is for your primary residence then look where it says P.R.E. (primary residence exemption) on your bill and you should be getting an exemption for this. If it says 0% contact me or the assessor for help. You will always receive a bill even if you have an escrow account.
- Name changes are done only at Emmet County Equalization 231-348-1708 You can call your local treasurer with any address changes.
- If you have a business, remember to look for the mailing this winter from the Assessor and file for your personal property tax exemption. This is important! Call with any questions.
- Remember that any taxes that arrive after the due date must have a legible postmark or there will be interest applied.
- If you need a receipt please send a request with your payment with either an email or a self addressed stamped envelope.

Keep on. - Kim Shomin

WINTER TAX DUE DATE: February 14, 2019

Taxes paid by this date accrue no interest or penalties

Please Note: Contact the Sewer Department for information on Sewer Taps if you are building. You can also visit our website for information and print a sewer application. <https://www.littlefieldtwp.org/departments/sewer-department/sewer/>

Township Phone Numbers

Emergency: 911
Fire Department: 231-548-5646
Supervisor: Damien Henning 231-548-5443
Clerk: Sondra Festerling 231-348-8464
Treasurer: Kim Shomin 231-548-2142
Assessor: Jim LaPeer: 231-238-9606
Cemetery Sexton & Sewer Clerk:
Kim Morgan 231-529-5542
Trustee: Dean Morford 231-347-0653
Trustee: Katie Derrohn 231-347-1937

**Alanson Holiday
Open House
Friday, December 14
5-8 pm.**

**Petoskey Steel Drum
will perform at 7 pm
on River Street**

Littlefield Alanson Community Hall Rental

For more information: www.villageofalanson.com/services/other-services/